

# POPULATION ANALYSIS DENSITY PER SQUARE MILE - 2004 FIGURES

## LEGEND

### Boundaries

- Boundary - Corporate
- Fargo ETZ
- West Fargo ETZ
- Parcels - Clay County

### Other

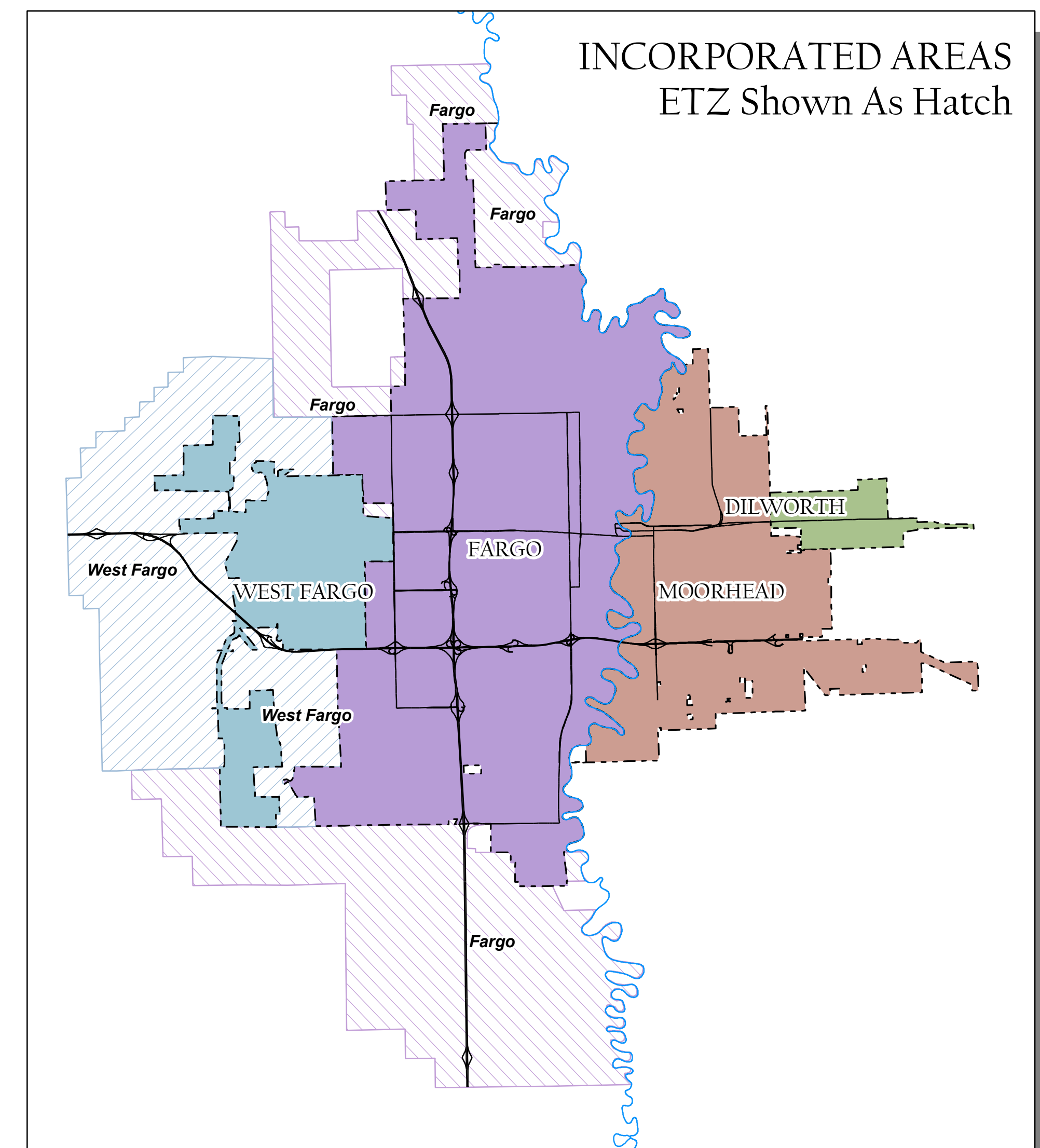
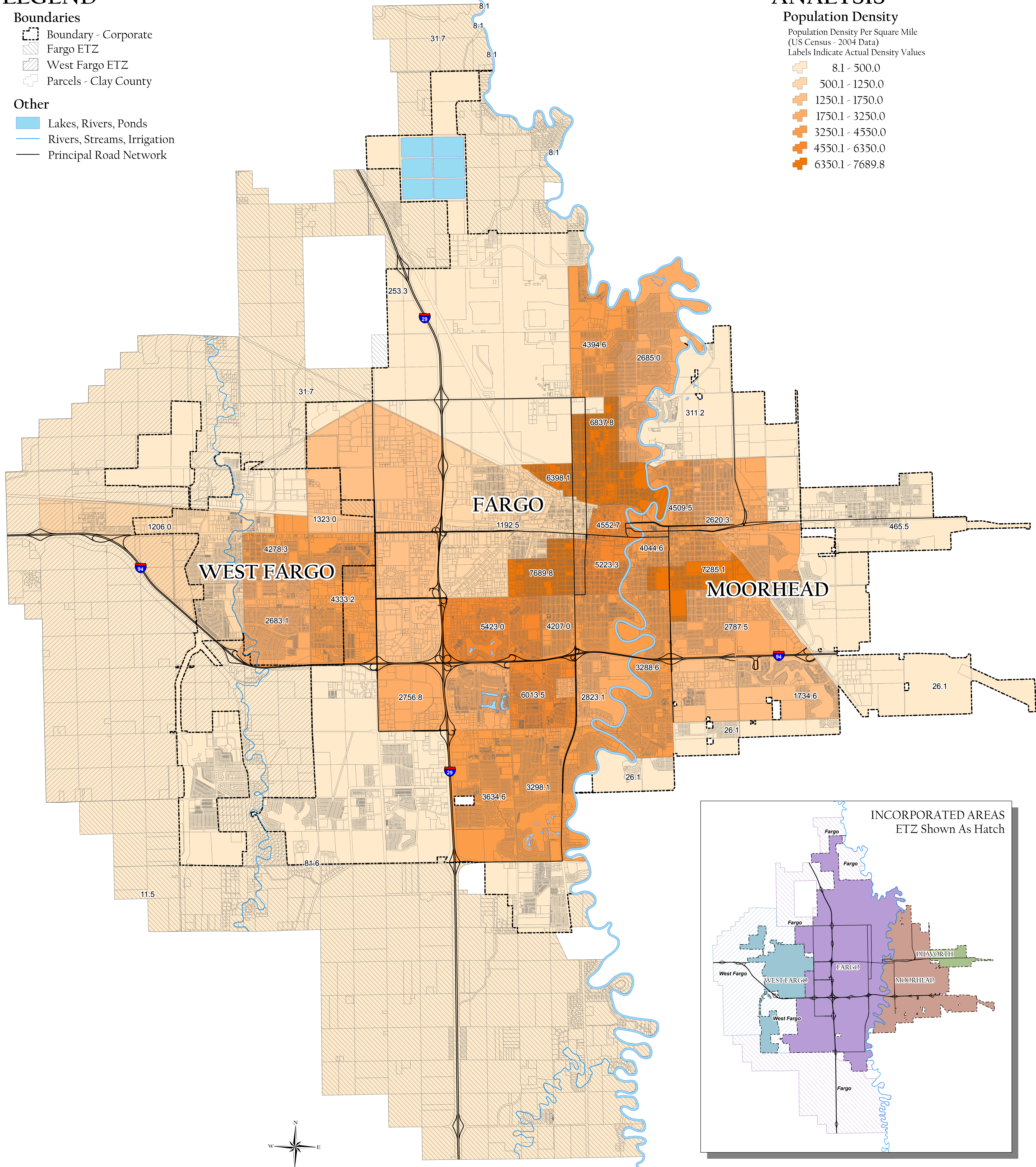
- Lakes, Rivers, Ponds
- Rivers, Streams, Irrigation
- Principal Road Network

## ANALYSIS

### Population Density

Population Density Per Square Mile  
(US Census - 2004 Data)  
Labels Indicate Actual Density Values

- 8.1 - 500.0
- 500.1 - 1250.0
- 1250.1 - 1750.0
- 1750.1 - 3250.0
- 3250.1 - 4550.0
- 4550.1 - 6350.0
- 6350.1 - 7689.8



Map Produced For The Metropolitan Sports Facilities Committee Framework Plan  
By Geowest, Incorporated - Morrison, Colorado - 303.904.9982  
The Plan Committee Is Comprised Of Representatives From Fargo And West Fargo North Dakota & Moorhead And Dilworth Minnesota  
This Map Is Intended For Planning & Discussion Purposes Only. Please Refer To The Plan Document For Map Details  
Legend Elements May Vary In Size From Those Shown On Map  
Map Published - September 2005

# METROPOLITAN SPORTS FACILITIES COMMITTEE FRAMEWORK PLAN

