






## Parks and Recreation

1300 15<sup>th</sup> Ave N | Moorhead, MN 56560 | 218.299.5340

### Adopt a Park: Allyson



Key	
	: Adopt a Park zone
	: Parking
	: Garbage Drop-off

#### Zone Details

The park runs from 3rd St S to the back end of the soccer field.

**Recommended Parking:** Parking is available along 3rd St S.

Adopted by:

Acres: 4

**Garbage:** Tied and placed inside the garbage cans in the park. Please notify Moorhead Parks and Recreation of location when complete with the clean up to have garbage bags picked up:

[trevor.magnuson@cityofmoorhead.com](mailto:trevor.magnuson@cityofmoorhead.com)






## Parks and Recreation

1300 15<sup>th</sup> Ave N | Moorhead, MN 56560 | 218.299.5340

### Adopt a Park: Alm



Key	
	: Adopt a Park zone
	: Parking
	: Garbage Drop-off

#### Zone Details

Park runs from a western border of Elm St to the back end of the tennis courts on the east side. 14th Ave serves as the southern border.

**Recommended Parking:** Parking is available along Elm St S.

Adopted by:

Acres: 2.5

**Garbage:** Tied and placed inside the garbage cans in the park. Please notify Moorhead Parks and Recreation of location when complete with the clean up to have garbage bags picked up:

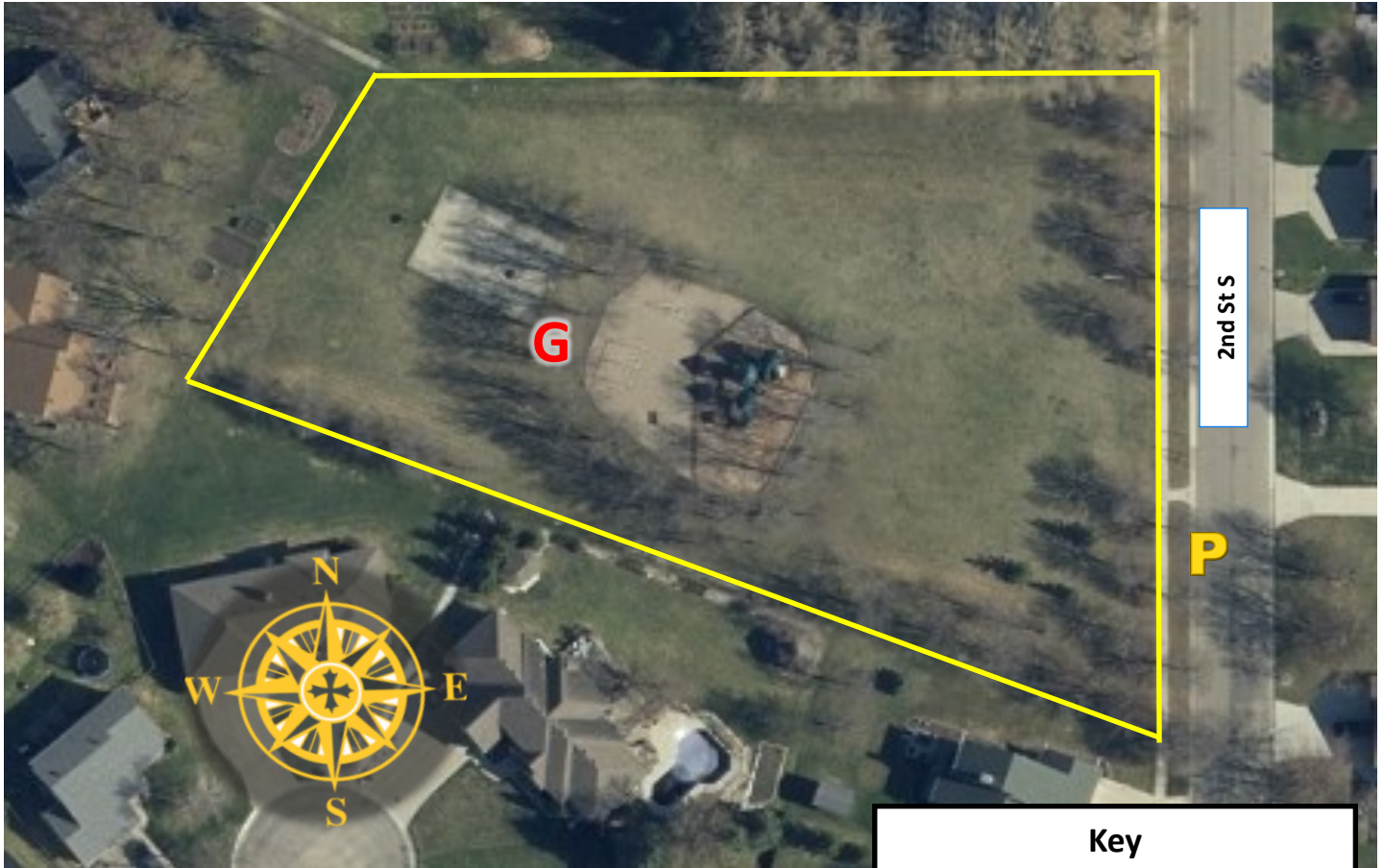
[trevor.magnuson@cityofmoorhead.com](mailto:trevor.magnuson@cityofmoorhead.com)





Parks and Recreation

1300 15<sup>th</sup> Ave N | Moorhead, MN 56560 | 218.299.5340

## Adopt a Park: Angelas



Key	
	: Adopt a Park zone
	: Parking
	: Garbage Drop-off

### Zone Details

Park runs from 2nd St S to the walk path at the northwest corner, with trees bordering its northern and southern boundaries.

**Recommended Parking:** Parking is available along 2nd St S.

Adopted by:

Acres: 2

**Garbage:** Tied and placed inside the garbage cans in the park. Please notify Moorhead Parks and Recreation of location when complete with the clean up to have garbage bags picked up:

[trevor.magnuson@cityofmoorhead.com](mailto:trevor.magnuson@cityofmoorhead.com)



Parks and Recreation

1300 15<sup>th</sup> Ave N | Moorhead, MN 56560 | 218.299.5340

## Adopt a Park: Arbor



### Zone Details

Park runs from 30th St N to each end of the pond in the southern corner.




**Recommended Parking:** Parking is available along 30th St N.

Adopted by:

Acres: 2

**Garbage:** Tied and placed inside the garbage cans in the park. Please notify Moorhead Parks and Recreation of location when complete with the clean up to have garbage bags picked up:

[trevor.magnuson@cityofmoorhead.com](mailto:trevor.magnuson@cityofmoorhead.com)

Key	
	: Adopt a Park zone
	: Parking
	: Garbage Drop-off



Parks and Recreation

1300 15<sup>th</sup> Ave N | Moorhead, MN 56560 | 218.299.5340

## Adopt a Park: Arrowhead



### Zone Details

The park is bordered by fencing on its eastern and northern boundaries with 6th Ave N on its southern end.

**Recommended Parking:** Parking is available along 6th Ave N.

Adopted by:

Acres: .5

**Garbage:** Tied and placed inside the garbage cans in the park. Please notify Moorhead Parks and Recreation of location when complete with the clean up to have garbage bags picked up:

[trevor.magnuson@cityofmoorhead.com](mailto:trevor.magnuson@cityofmoorhead.com)

### Key

 : Adopt a Park zone

 : Parking

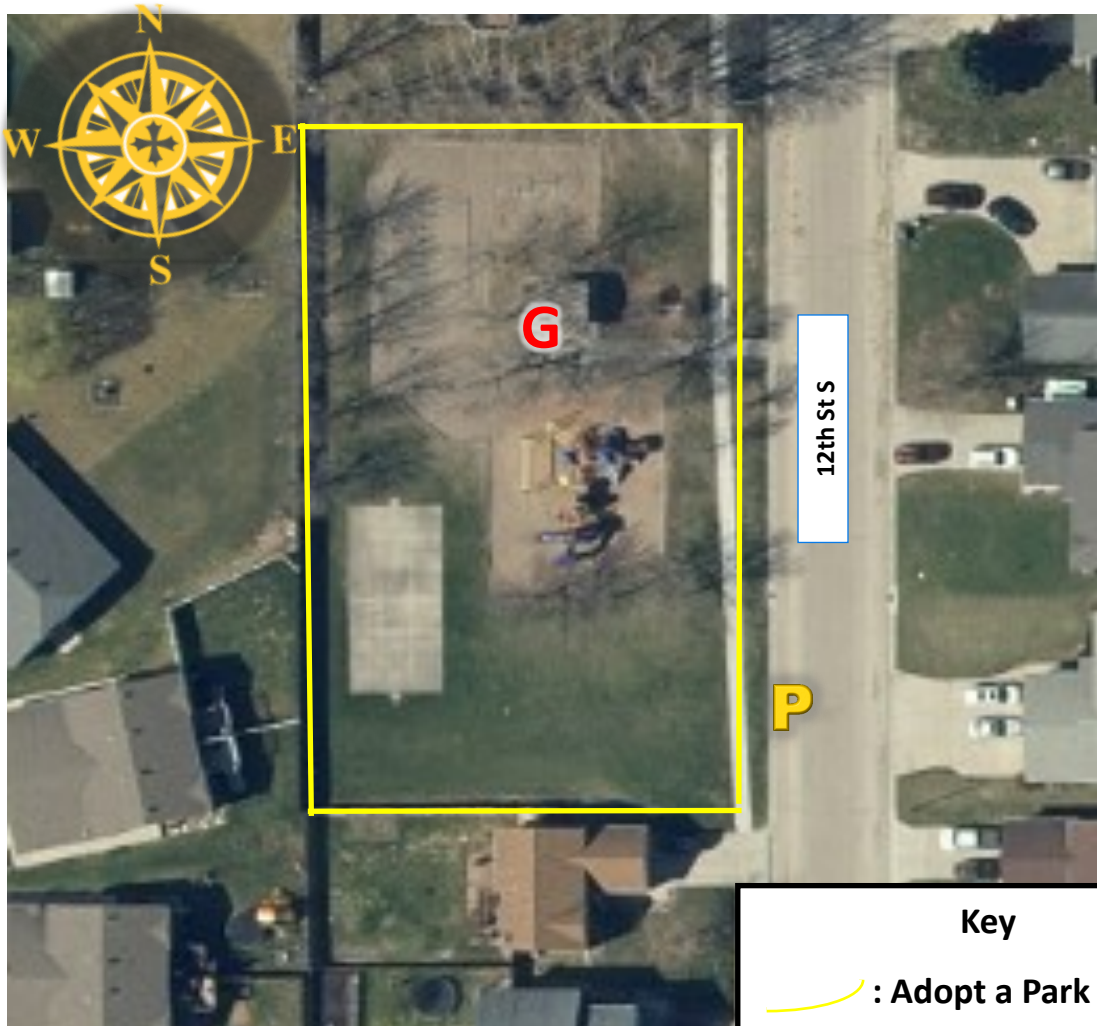
 : Garbage Drop-off






Parks and Recreation

1300 15<sup>th</sup> Ave N | Moorhead, MN 56560 | 218.299.5340

## Adopt a Park: Belsly



Key	
	: Adopt a Park zone
	: Parking
	: Garbage Drop-off

### Zone Details

The park is bordered by fencing and 12th St S.

**Recommended Parking:** Parking is available along 12th St S.

Adopted by:

Acres: .5

**Garbage:** Tied and placed inside the garbage cans in the park. Please notify Moorhead Parks and Recreation of location when complete with the clean up to have garbage bags picked up:

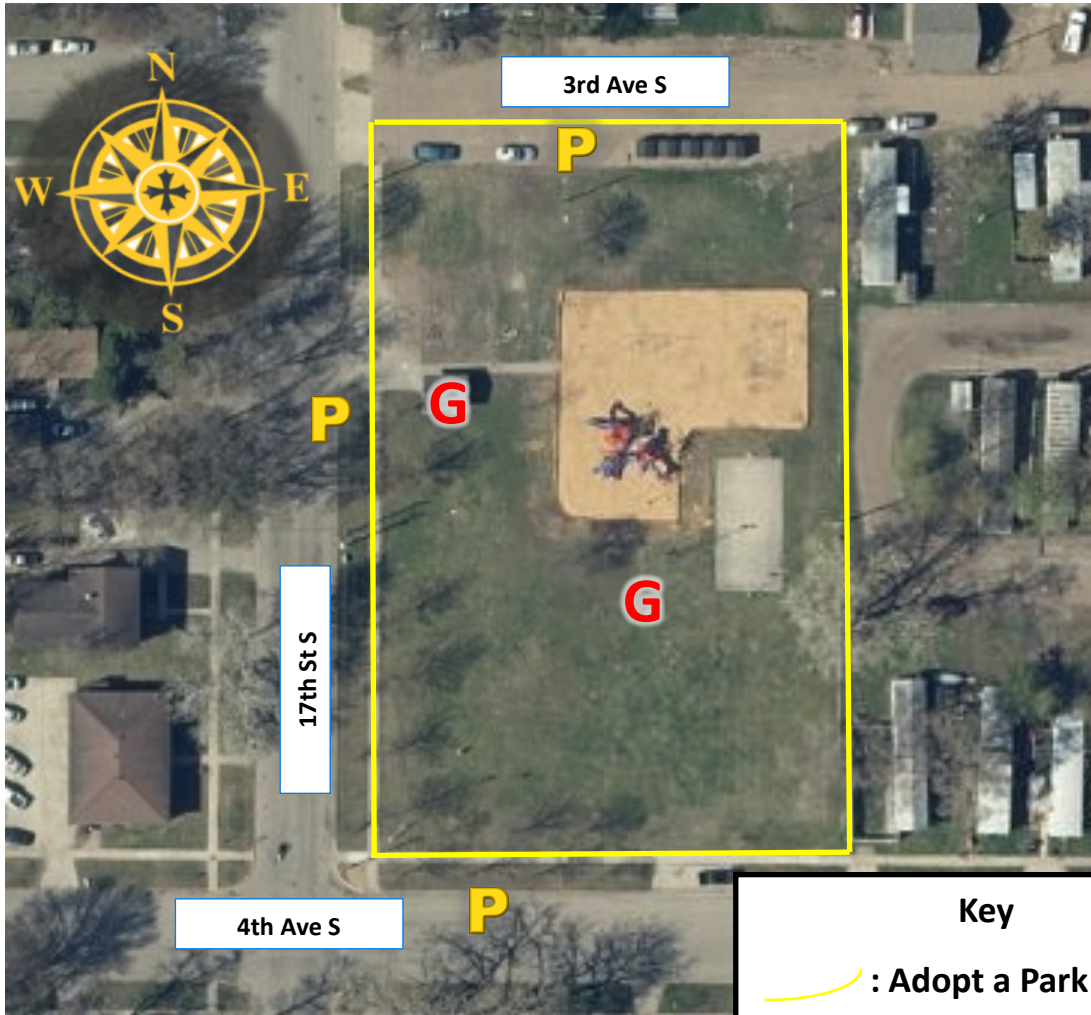
[trevor.magnuson@cityofmoorhead.com](mailto:trevor.magnuson@cityofmoorhead.com)



## Parks and Recreation

1300 15<sup>th</sup> Ave N | Moorhead, MN 56560 | 218.299.5340

# Adopt a Park: Bennett



### Zone Details

The park is bordered by 3rd Ave S, 17th St S, and 4th Ave S with trees and fencing on its eastern end.

**Recommended Parking:** Parking is available along each of the streets around the park.

Adopted by:

Acres: 2

**Garbage:** Tied and placed inside the garbage cans in the park. Please notify Moorhead Parks and Recreation of location when complete with the clean up to have garbage bags picked up:

[trevor.magnuson@cityofmoorhead.com](mailto:trevor.magnuson@cityofmoorhead.com)



## Adopt a Park: Brentwood Acres



### Zone Details

The park is bordered by trees on all sides and has a walkway into the park from 62nd Ave N.




**Recommended Parking:** Parking is available along 62nd Ave N.

Adopted by:

Acres: 4.5

**Garbage:** Tied and placed inside the garbage cans in the park. Please notify Moorhead Parks and Recreation of location when complete with the clean up to have garbage bags picked up:

[trevor.magnuson@cityofmoorhead.com](mailto:trevor.magnuson@cityofmoorhead.com)

Key	
	: Adopt a Park zone
	: Parking
	: Garbage Drop-off





Parks and Recreation

1300 15<sup>th</sup> Ave N | Moorhead, MN 56560 | 218.299.5340

## Adopt a Park: Bridgeview/Original Homestead



### Zone Details

The park is bordered by the Red River and runs through the trees next to the parking loop.

**Recommended Parking:** Parking is available in the 7th St N parking loop.

Adopted by:

Acres: 13.5

**Garbage:** Tied and placed inside the garbage cans in the park. Please notify Moorhead Parks and Recreation of location when complete with the clean up to have garbage bags picked up:

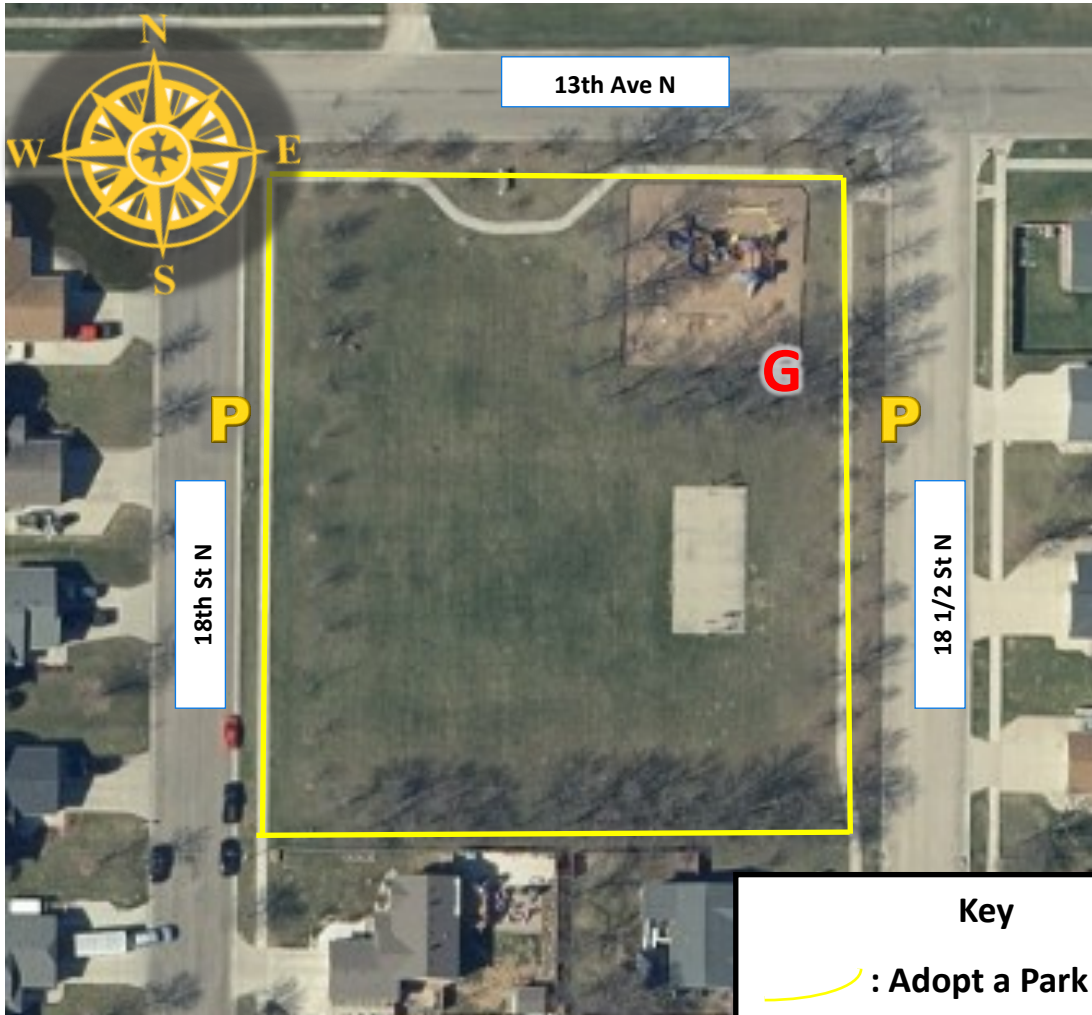
[trevor.magnuson@cityofmoorhead.com](mailto:trevor.magnuson@cityofmoorhead.com)



## Parks and Recreation

1300 15<sup>th</sup> Ave N | Moorhead, MN 56560 | 218.299.5340

### Adopt a Park: Buland



#### Zone Details

The park is bordered by 18th St N, 13th Ave N, and 18 1/2 St N with trees on its southern border.

**Recommended Parking:** Parking is available along each of the streets around the park.

Adopted by:

Acres: 1.5

**Garbage:** Tied and placed inside the garbage cans in the park. Please notify Moorhead Parks and Recreation of location when complete with the clean up to have garbage bags picked up:

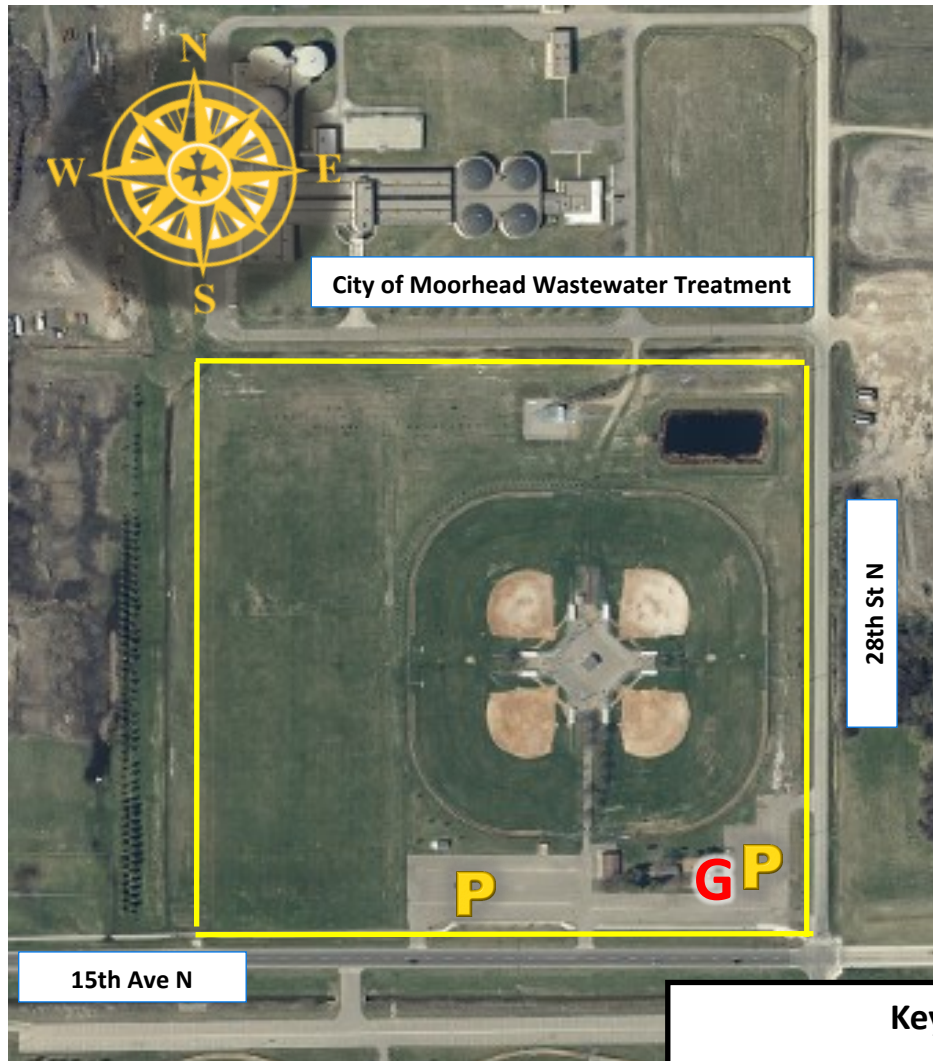
[trevor.magnuson@cityofmoorhead.com](mailto:trevor.magnuson@cityofmoorhead.com)



## Parks and Recreation

1300 15<sup>th</sup> Ave N | Moorhead, MN 56560 | 218.299.5340

### Adopt a Park: Centennial



#### Zone Details

The park is bordered by 15th Ave N and 28th St N with the City of Moorhead Wastewater Treatment Facility on its northern end.


**Recommended Parking:** Parking is available in the parking lots at the southern end of the ball diamonds.

Adopted by:

Acres: 34

**Garbage:** Tied and placed inside the garbage cans in the park. Please notify Moorhead Parks and Recreation of location when complete with the clean up to have garbage bags picked up:

[trevor.magnuson@cityofmoorhead.com](mailto:trevor.magnuson@cityofmoorhead.com)

Key	
	: Adopt a Park zone
<b>P</b>	: Parking
<b>G</b>	: Garbage Drop-off






Parks and Recreation

1300 15<sup>th</sup> Ave N | Moorhead, MN 56560 | 218.299.5340

## Adopt a Park: Crystal Creek



Key	
	: Adopt a Park zone
	: Parking
	: Garbage Drop-off

### Zone Details

The park is bordered by Oakport St N and 51st Ave N with trees on its northernmost end.

**Recommended Parking:** Parking is available along Oakport St N.

Adopted by:

Acres: 1

**Garbage:** Tied and placed inside the garbage cans in the park. Please notify Moorhead Parks and Recreation of location when complete with the clean up to have garbage bags picked up:

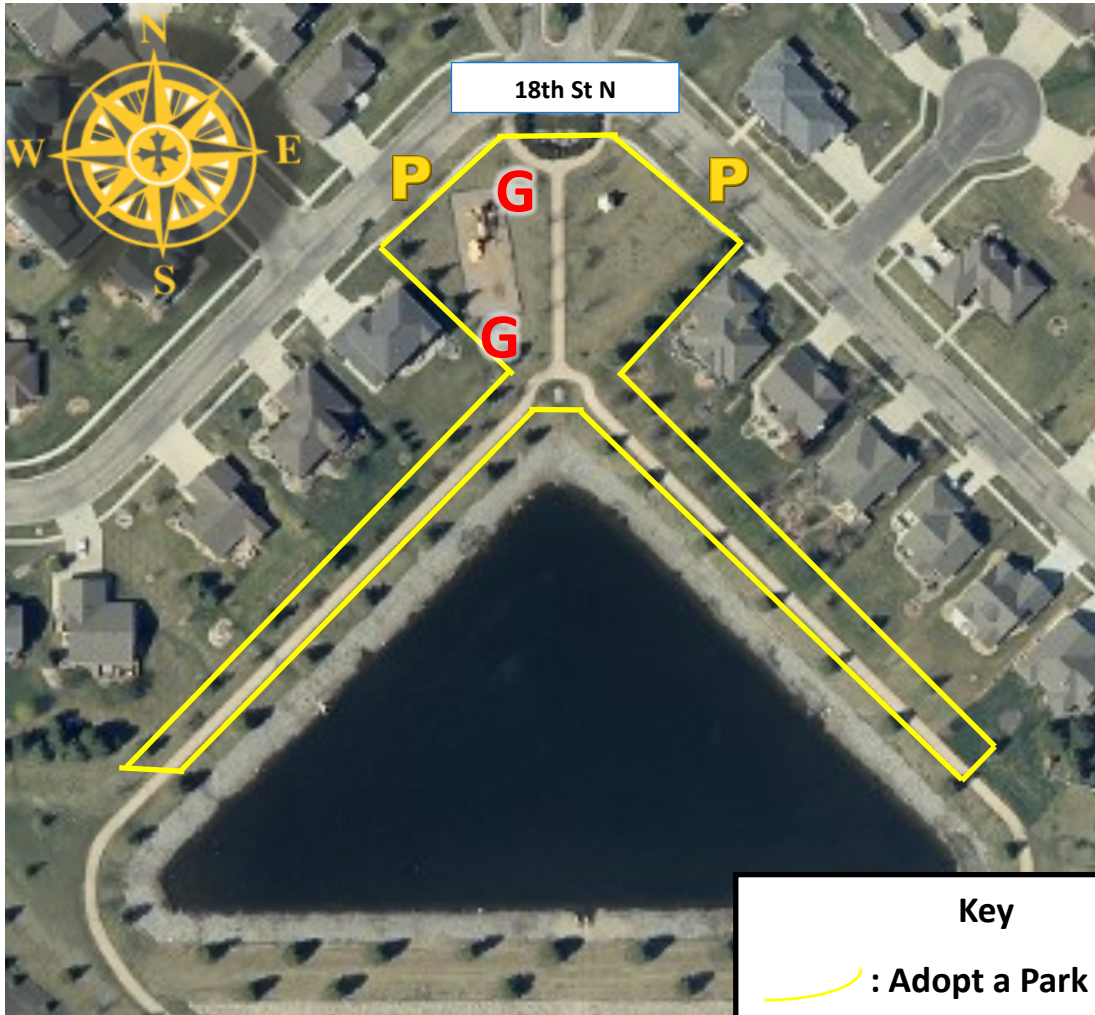
[trevor.magnuson@cityofmoorhead.com](mailto:trevor.magnuson@cityofmoorhead.com)






Parks and Recreation

1300 15<sup>th</sup> Ave N | Moorhead, MN 56560 | 218.299.5340

## Adopt a Park: Evergreen Meadows



Key	
	: Adopt a Park zone
	: Parking
	: Garbage Drop-off

### Zone Details

The park is bordered by 18th St N and has southern paths that have trees on either side.

**Recommended Parking:** Parking is available along 18th St N.

Adopted by:

Acres: 1.5

**Garbage:** Tied and placed inside the garbage cans in the park. Please notify Moorhead Parks and Recreation of location when complete with the clean up to have garbage bags picked up:

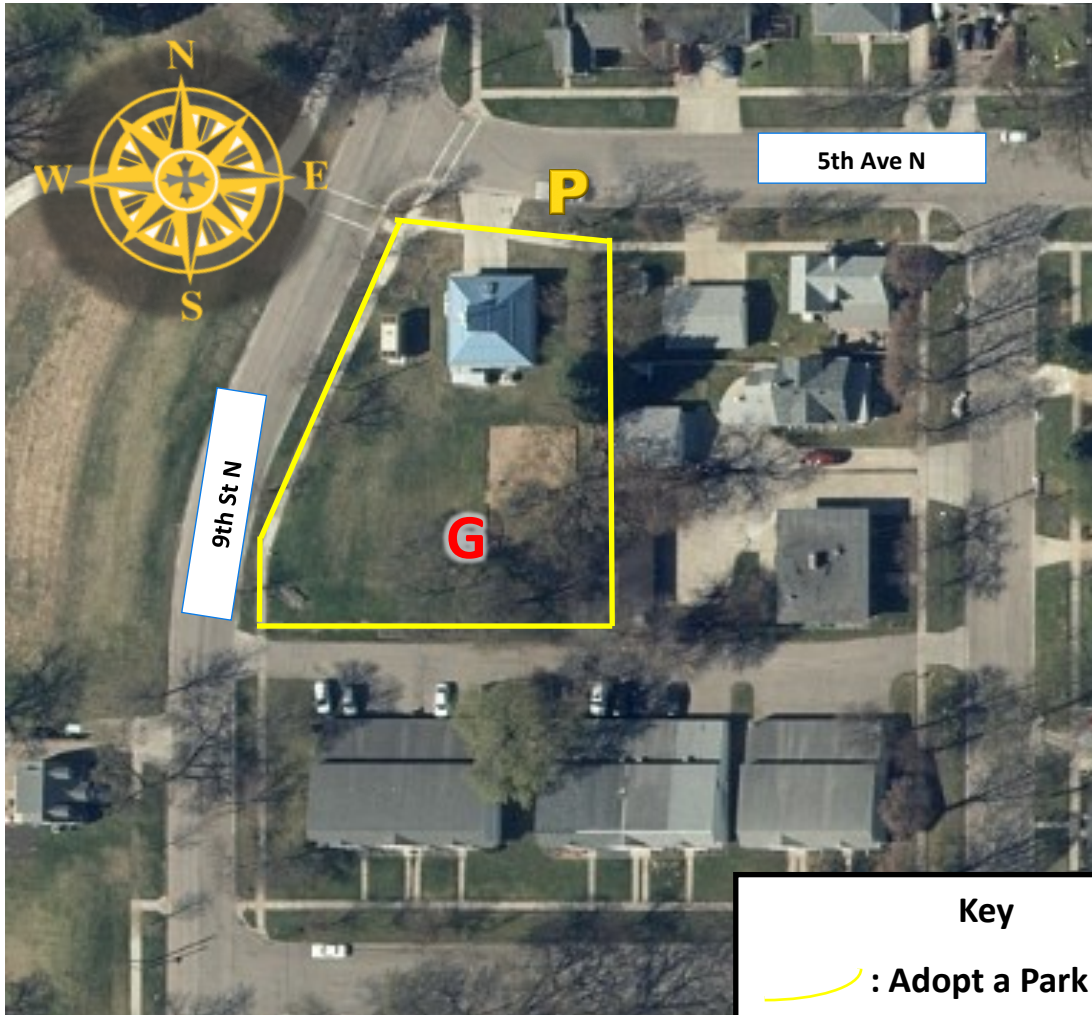
[trevor.magnuson@cityofmoorhead.com](mailto:trevor.magnuson@cityofmoorhead.com)



## Parks and Recreation

1300 15<sup>th</sup> Ave N | Moorhead, MN 56560 | 218.299.5340

# Adopt a Park: Five Nine



### Zone Details

The park is bordered by 9th St N and 5th Ave N with trees on its eastern end.

**Recommended Parking:** Parking is available along 5th Ave N.

Adopted by:

Acres: .5

**Garbage:** Tied and placed inside the garbage cans in the park. Please notify Moorhead Parks and Recreation of location when complete with the clean up to have garbage bags picked up:

[trevor.magnuson@cityofmoorhead.com](mailto:trevor.magnuson@cityofmoorhead.com)

### Key

 : Adopt a Park zone

**P** : Parking

**G** : Garbage Drop-off






Parks and Recreation

1300 15<sup>th</sup> Ave N | Moorhead, MN 56560 | 218.299.5340

## Adopt a Park: Gooseberry Mound



Key	
	: Adopt a Park zone
	: Parking
	: Garbage Drop-off

### Zone Details

The park is bordered by the Red River and has 22nd Ave S run throughout the site.

**Recommended Parking:** Parking is available in the parking lot along 22nd Ave S by the playground.

Adopted by:

Acres: 42

**Garbage:** Tied and placed inside the garbage cans in the park. Please notify Moorhead Parks and Recreation of location when complete with the clean up to have garbage bags picked up: [trevor.magnuson@cityofmoorhead.com](mailto:trevor.magnuson@cityofmoorhead.com)






Parks and Recreation

1300 15<sup>th</sup> Ave N | Moorhead, MN 56560 | 218.299.5340

## Adopt a Park: Hampton



Key	
	: Adopt a Park zone
	: Parking
	: Garbage Drop-off

### Zone Details

The park is bordered by Hunters Dr and Hampton Dr W with a pond in the center of the zone.

**Recommended Parking:** Parking is available along Hampton Dr W.

Adopted by:

Acres: 7.5

**Garbage:** Tied and placed inside the garbage cans in the park. Please notify Moorhead Parks and Recreation of location when complete with the clean up to have garbage bags picked up:

[trevor.magnuson@cityofmoorhead.com](mailto:trevor.magnuson@cityofmoorhead.com)








Parks and Recreation

1300 15<sup>th</sup> Ave N | Moorhead, MN 56560 | 218.299.5340

## Adopt a Park: Hansmann



Key	
	: Adopt a Park zone
	: Parking
	: Garbage Drop-off

### Zone Details

The park is surrounded by 13th St N and 14th St N as well as 13th Ave N and 12th Ave N.

**Recommended Parking:** Parking is available all around the park.

Adopted by:

Acres: 4.5

**Garbage:** Tied and placed inside the garbage cans in the park. Please notify Moorhead Parks and Recreation of location when complete with the clean up to have garbage bags picked up:

[trevor.magnuson@cityofmoorhead.com](mailto:trevor.magnuson@cityofmoorhead.com)



Parks and Recreation

1300 15<sup>th</sup> Ave N | Moorhead, MN 56560 | 218.299.5340

## Adopt a Park: Horizon Shores



### Zone Details

The park is bordered by 24th Ave S and walkways that run along the pond.

**Recommended Parking:** Parking is available at the north end of the zone in the parking lot.

Adopted by:

Acres: 4

**Garbage:** Tied and placed inside the garbage cans in the park. Please notify Moorhead Parks and Recreation of location when complete with the clean up to have garbage bags picked up:

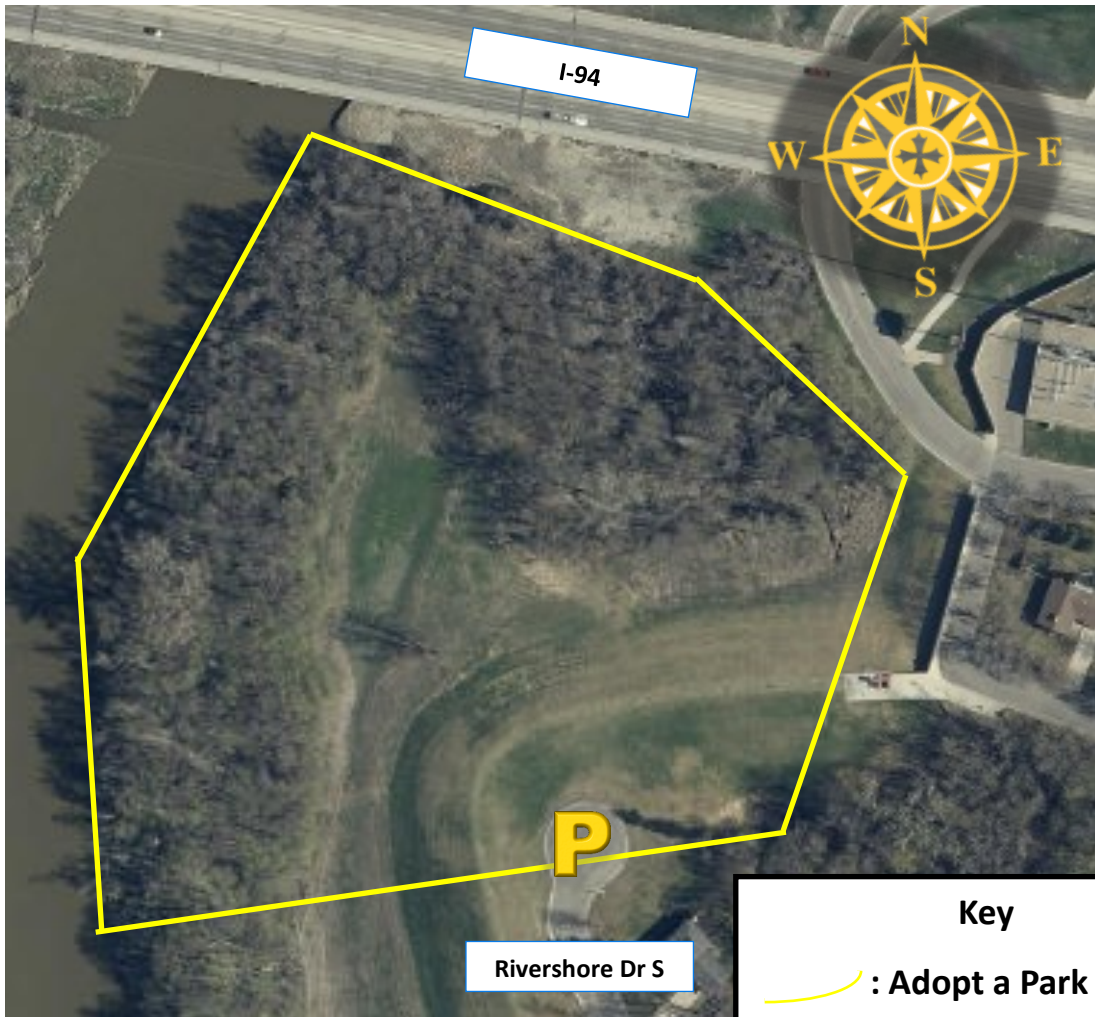
[trevor.magnuson@cityofmoorhead.com](mailto:trevor.magnuson@cityofmoorhead.com)






Parks and Recreation

1300 15<sup>th</sup> Ave N | Moorhead, MN 56560 | 218.299.5340

## Adopt a Park: Horn



Key	
	: Adopt a Park zone
	: Parking
	: Garbage Drop-off

### Zone Details

The park is surrounded by trees and the river with a parking loop at the end of Rivershore Dr S.

**Recommended Parking:** Parking is available in the loop at the end of Rivershore Dr S.

Adopted by:

Acres: 8.5

**Garbage:** Tied and placed inside the garbage cans in the park. Please notify Moorhead Parks and Recreation of location when complete with the clean up to have garbage bags picked up:

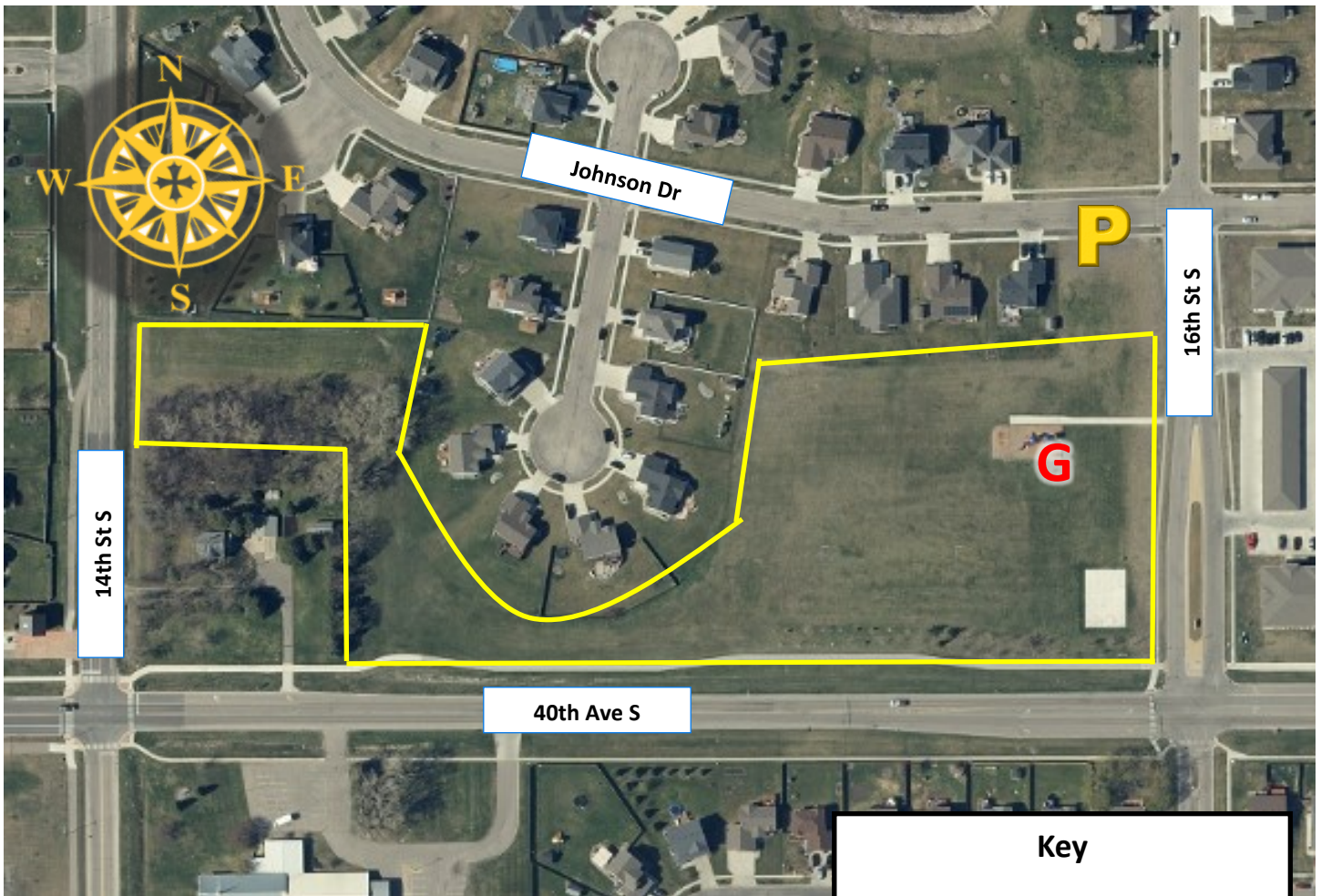
[trevor.magnuson@cityofmoorhead.com](mailto:trevor.magnuson@cityofmoorhead.com)




Parks and Recreation

1300 15<sup>th</sup> Ave N | Moorhead, MN 56560 | 218.299.5340

## Adopt a Park: Johnson Farms



**Key**

-  : Adopt a Park zone
- P** : Parking
- G** : Garbage Drop-off

### Zone Details

The park is surrounded by Johnson Dr, 14th St S, 16th St S, and 40th Ave S, with housing and trees as the zone boundaries.

**Recommended Parking:** Parking is available all around the park.

Adopted by:

Acres: 7

**Garbage:** Tied and placed inside the garbage cans in the park. Please notify Moorhead Parks and Recreation of location when complete with the clean up to have garbage bags picked up:

[trevor.magnuson@cityofmoorhead.com](mailto:trevor.magnuson@cityofmoorhead.com)




## Parks and Recreation

1300 15<sup>th</sup> Ave N | Moorhead, MN 56560 | 218.299.5340

### Adopt a Park: Knapp



Key	
	: Adopt a Park zone
<b>P</b>	: Parking
<b>G</b>	: Garbage Drop-off

#### Zone Details

The park is bordered by 5th St S and 6th St S with trees and fencing on the northern and southern ends.

**Recommended Parking:** Parking is available along 6th St S.

Adopted by:

Acres: .5

**Garbage:** Tied and placed inside the garbage cans in the park. Please notify Moorhead Parks and Recreation of location when complete with the clean up to have garbage bags picked up:

[trevor.magnuson@cityofmoorhead.com](mailto:trevor.magnuson@cityofmoorhead.com)




Parks and Recreation

1300 15<sup>th</sup> Ave N | Moorhead, MN 56560 | 218.299.5340

Adopt a Park: Lamb



**Key**

-  : Adopt a Park zone
- P** : Parking
- G** : Garbage Drop-off

Zone Details

The park is bordered by 12th Ave S, 14th Ave S, 13th St S, and 14th St S.

**Recommended Parking:** Parking is available along 13th St S and 14th Ave S.

Adopted by:

Acres: 4

**Garbage:** Tied and placed inside the garbage cans in the park. Please notify Moorhead Parks and Recreation of location when complete with the clean up to have garbage bags picked up:

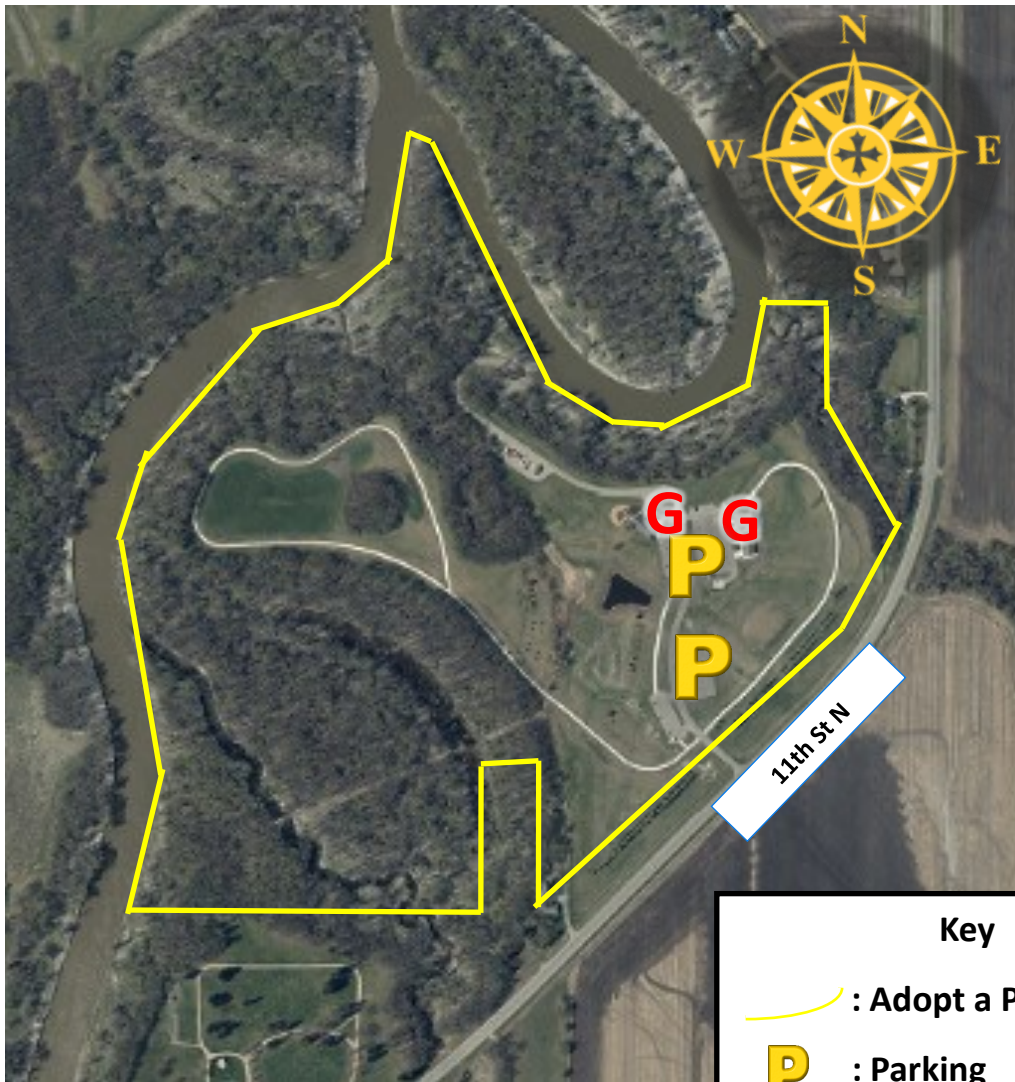
[trevor.magnuson@cityofmoorhead.com](mailto:trevor.magnuson@cityofmoorhead.com)






Parks and Recreation

1300 15<sup>th</sup> Ave N | Moorhead, MN 56560 | 218.299.5340

## Adopt a Park: M.B. Johnson



Key	
	: Adopt a Park zone
	: Parking
	: Garbage Drop-off

### Zone Details

The park is bordered by 11th St N and the Red River.

**Recommended Parking:** Parking is available in the parking lots upon entering the park.

Adopted by:

Acres: 110

**Garbage:** Tied and placed inside the garbage cans in the park. Please notify Moorhead Parks and Recreation of location when complete with the clean up to have garbage bags picked up:

[trevor.magnuson@cityofmoorhead.com](mailto:trevor.magnuson@cityofmoorhead.com)



## Parks and Recreation

1300 15<sup>th</sup> Ave N | Moorhead, MN 56560 | 218.299.5340

### Adopt a Park: W.H. Davy



#### Zone Details

The park is bordered by 1st Ave N and 8th St N with the Red River running along its western edge.




**Recommended Parking:** Parking is available in the parking lots by the playground.

Adopted by:

Acres: 8.5

**Garbage:** Tied and placed inside the garbage cans in the park. Please notify Moorhead Parks and Recreation of location when complete with the clean up to have garbage bags picked up:

[trevor.magnuson@cityofmoorhead.com](mailto:trevor.magnuson@cityofmoorhead.com)

Key	
	: Adopt a Park zone
	: Parking
	: Garbage Drop-off








Parks and Recreation

1300 15<sup>th</sup> Ave N | Moorhead, MN 56560 | 218.299.5340

## Adopt a Park: Morningside



Key	
	: Adopt a Park zone
	: Parking
	: Garbage Drop-off

### Zone Details

The park is bordered by sidewalks as well as trees on its northern end.

**Recommended Parking:** Parking is available in the Cullen Hockey Center parking lot.

Adopted by:

Acres: 1.5

**Garbage:** Tied and placed inside the garbage cans in the park. Please notify Moorhead Parks and Recreation of location when complete with the clean up to have garbage bags picked up:

[trevor.magnuson@cityofmoorhead.com](mailto:trevor.magnuson@cityofmoorhead.com)






## Parks and Recreation

1300 15<sup>th</sup> Ave N | Moorhead, MN 56560 | 218.299.5340

### Adopt a Park: Northeast



Key	
	: Adopt a Park zone
	: Parking
	: Garbage Drop-off

#### Zone Details

The park is bordered on all ends by 7th and 8th Ave N, as well as 18th and 19th St N.

**Recommended Parking:** Parking is available on 8th Ave N as well as 18th St N.

Adopted by:

Acres: 2

**Garbage:** Tied and placed inside the garbage cans in the park. Please notify Moorhead Parks and Recreation of location when complete with the clean up to have garbage bags picked up:

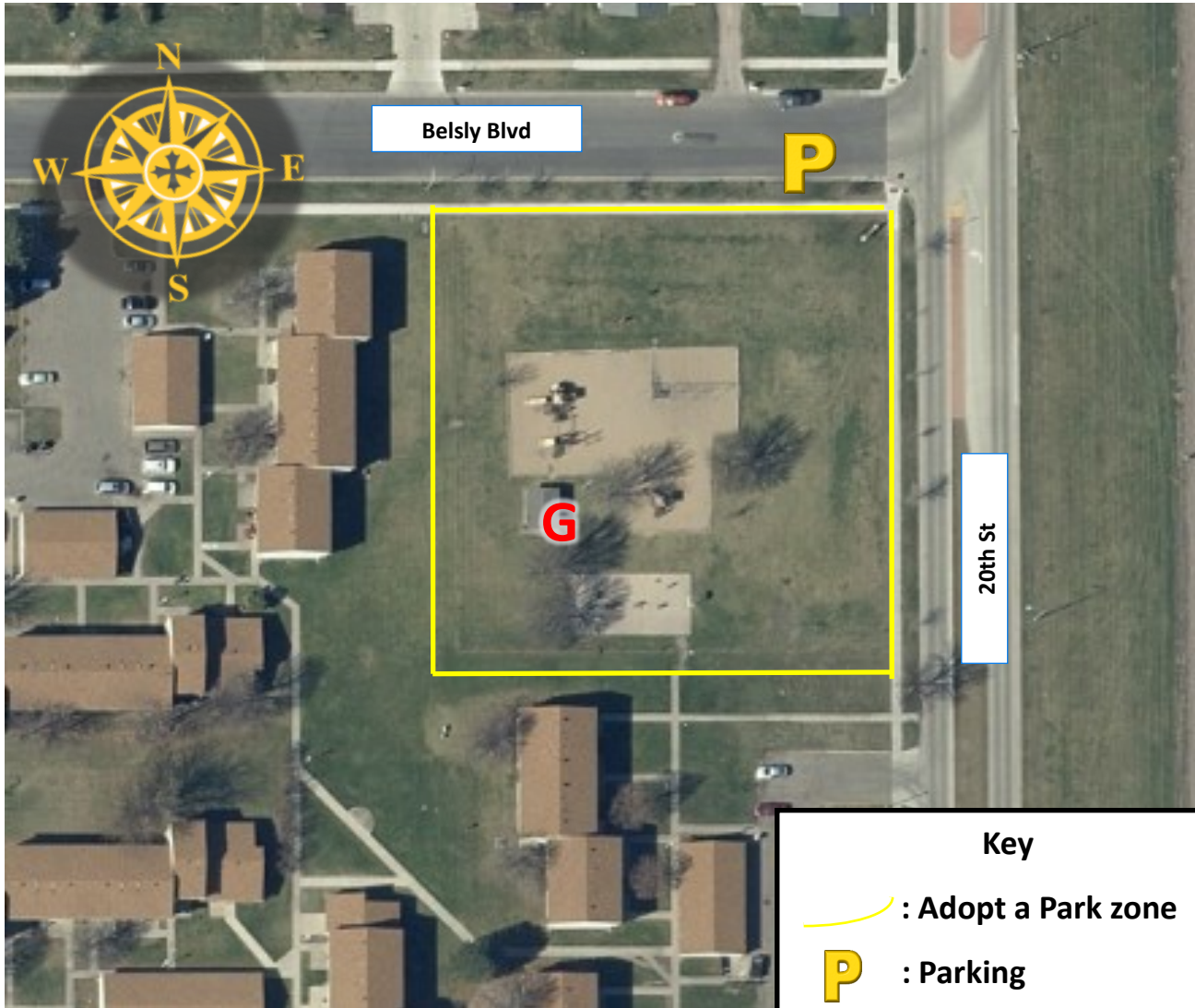
[trevor.magnuson@cityofmoorhead.com](mailto:trevor.magnuson@cityofmoorhead.com)



Parks and Recreation

1300 15<sup>th</sup> Ave N | Moorhead, MN 56560 | 218.299.5340

## Adopt a Park: Queens



### Zone Details

The park is bordered by Belsly Blvd and 20th St with housing on its southern and western ends.




**Recommended Parking:** Parking is available on Belsly Blvd.

Adopted by:

Acres: 1

**Garbage:** Tied and placed inside the garbage cans in the park. Please notify Moorhead Parks and Recreation of location when complete with the clean up to have garbage bags picked up:

[trevor.magnuson@cityofmoorhead.com](mailto:trevor.magnuson@cityofmoorhead.com)

Key	
	: Adopt a Park zone
	: Parking
	: Garbage Drop-off




Parks and Recreation

1300 15<sup>th</sup> Ave N | Moorhead, MN 56560 | 218.299.5340

Adopt a Park: Ridgewood



**Key**

 : Adopt a Park zone

**P** : Parking

**G** : Garbage Drop-off

Zone Details

The park is bordered by Ridgewood Blvd and 32nd St S with fencing and trees also serving as a border on the southern end.

**Recommended Parking:** Parking is available in the parking lot off of 32nd St S.

Adopted by:

Acres: 6.5

**Garbage:** Tied and placed inside the garbage cans in the park. Please notify Moorhead Parks and Recreation of location when complete with the clean up to have garbage bags picked up:

[trevor.magnuson@cityofmoorhead.com](mailto:trevor.magnuson@cityofmoorhead.com)



Parks and Recreation

1300 15<sup>th</sup> Ave N | Moorhead, MN 56560 | 218.299.5340

## Adopt a Park: River Oaks



### Zone Details

The park is bordered by 20th St with the Red River on its northern end.

**Recommended Parking:** Parking is available at the end of 20th St.

Adopted by:

Acres: 1

**Garbage:** Tied and placed inside the garbage cans in the park. Please notify Moorhead Parks and Recreation of location when complete with the clean up to have garbage bags picked up:

[trevor.magnuson@cityofmoorhead.com](mailto:trevor.magnuson@cityofmoorhead.com)

### Key

 : Adopt a Park zone

 : Parking

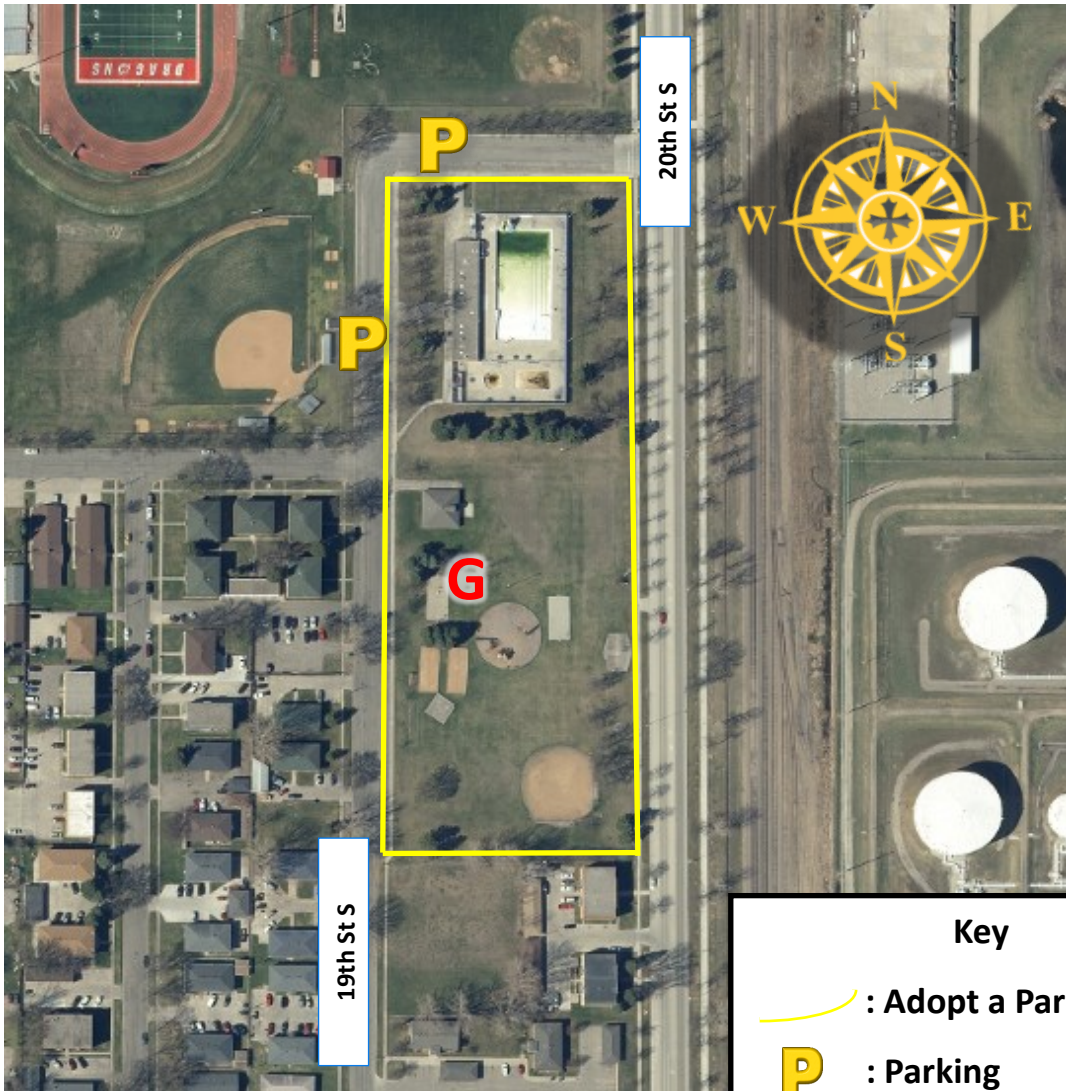
 : Garbage Drop-off






## Parks and Recreation

1300 15<sup>th</sup> Ave N | Moorhead, MN 56560 | 218.299.5340

# Adopt a Park: Romkey



Key	
	: Adopt a Park zone
	: Parking
	: Garbage Drop-off

### Zone Details

The park is bordered by 19th and 20th St S with trees on its southern end.

**Recommended Parking:** Parking is available in parking lot along 19th St S.

Adopted by:

Acres: 7

**Garbage:** Tied and placed inside the garbage cans in the park. Please notify Moorhead Parks and Recreation of location when complete with the clean up to have garbage bags picked up:

[trevor.magnuson@cityofmoorhead.com](mailto:trevor.magnuson@cityofmoorhead.com)






Parks and Recreation

1300 15<sup>th</sup> Ave N | Moorhead, MN 56560 | 218.299.5340

### Adopt a Park: South



Key	
	: Adopt a Park zone
	: Parking
	: Garbage Drop-off

#### Zone Details

The park is bordered by 14th St S and track fencing.

**Recommended Parking:** Parking is available on 14th St S.

Adopted by:

Acres: 1

**Garbage:** Tied and placed inside the garbage cans in the park. Please notify Moorhead Parks and Recreation of location when complete with the clean up to have garbage bags picked up:

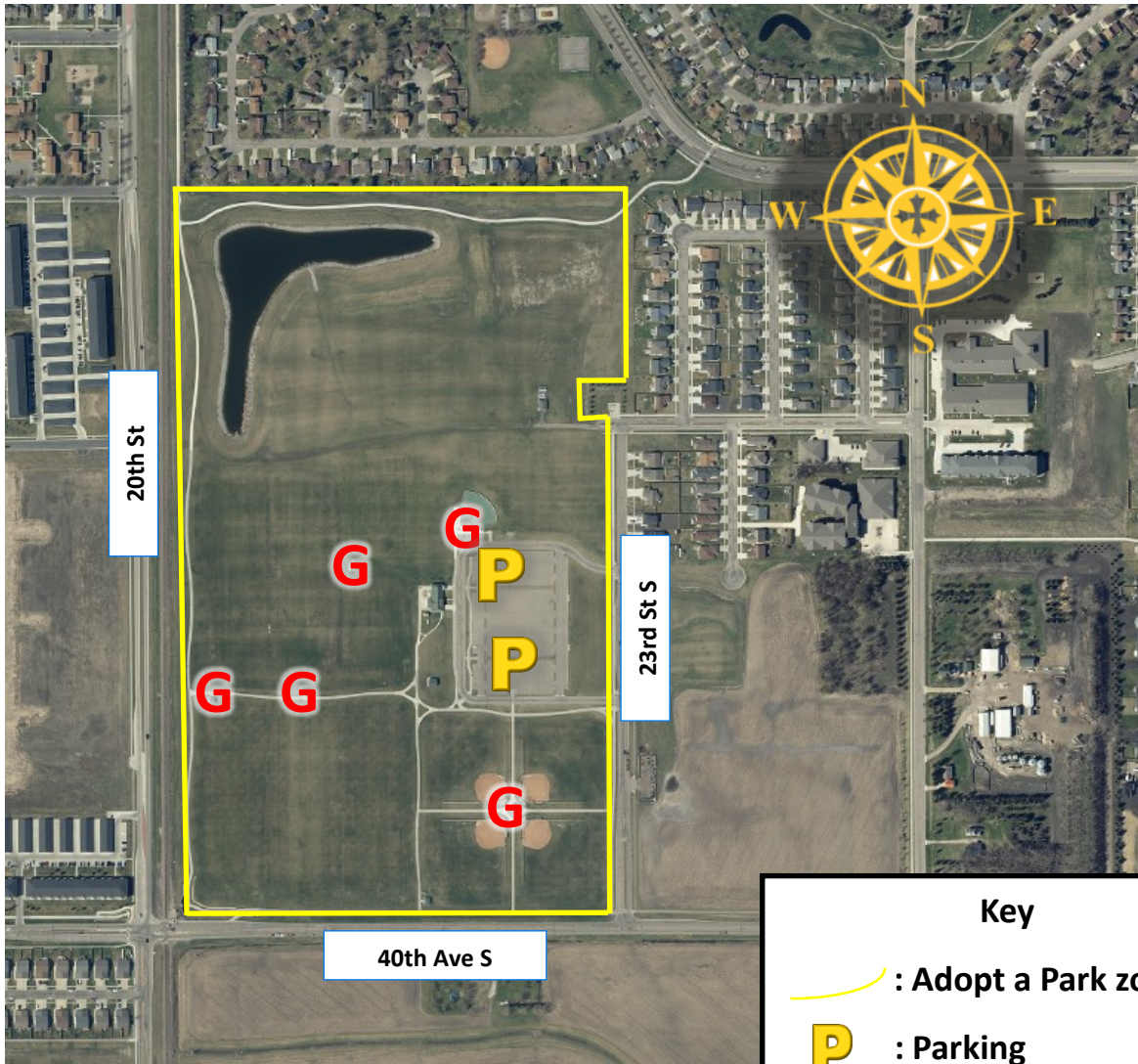
[trevor.magnuson@cityofmoorhead.com](mailto:trevor.magnuson@cityofmoorhead.com)



Parks and Recreation

1300 15<sup>th</sup> Ave N | Moorhead, MN 56560 | 218.299.5340

## Adopt a Park: Southside Regional



### Zone Details

The park is bordered by 20th St and 23rd St S as well as 40th Ave S.

**Recommended Parking:** Parking is available in parking lot off of 23rd St S.

Adopted by:

Acres: 100

**Garbage:** Tied and placed inside the garbage cans in the park. Please notify Moorhead Parks and Recreation of location when complete with the clean up to have garbage bags picked up:

[trevor.magnuson@cityofmoorhead.com](mailto:trevor.magnuson@cityofmoorhead.com)

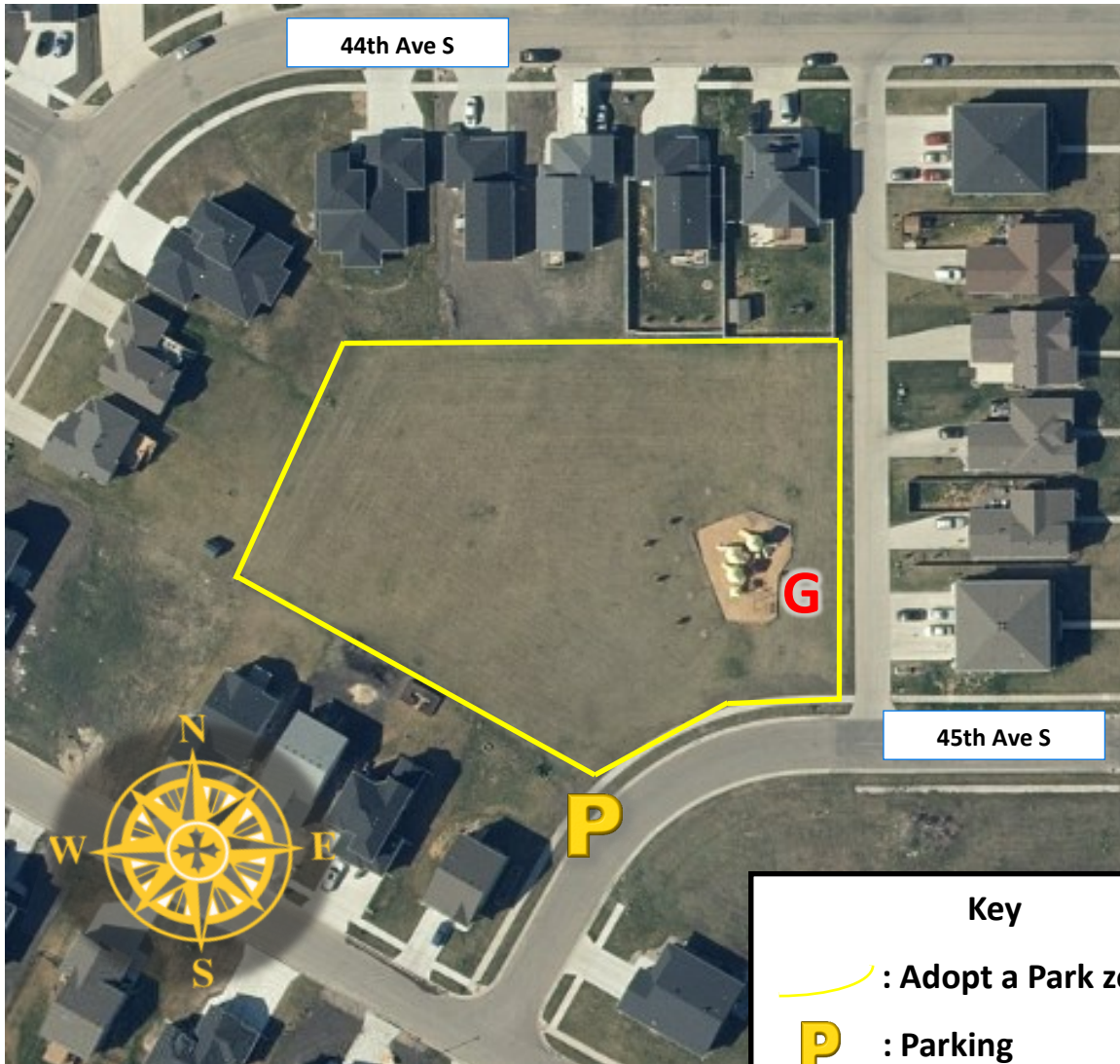







## Parks and Recreation

1300 15<sup>th</sup> Ave N | Moorhead, MN 56560 | 218.299.5340

# Adopt a Park: Stonemill



Key	
	: Adopt a Park zone
	: Parking
	: Garbage Drop-off

### Zone Details

The park is bordered by 45th Ave S with housing and fences also serving as boundaries.

**Recommended Parking:** Parking is available on 45th Ave S.

Adopted by:

Acres: 1.5

**Garbage:** Tied and placed inside the garbage cans in the park. Please notify Moorhead Parks and Recreation of location when complete with the clean up to have garbage bags picked up:

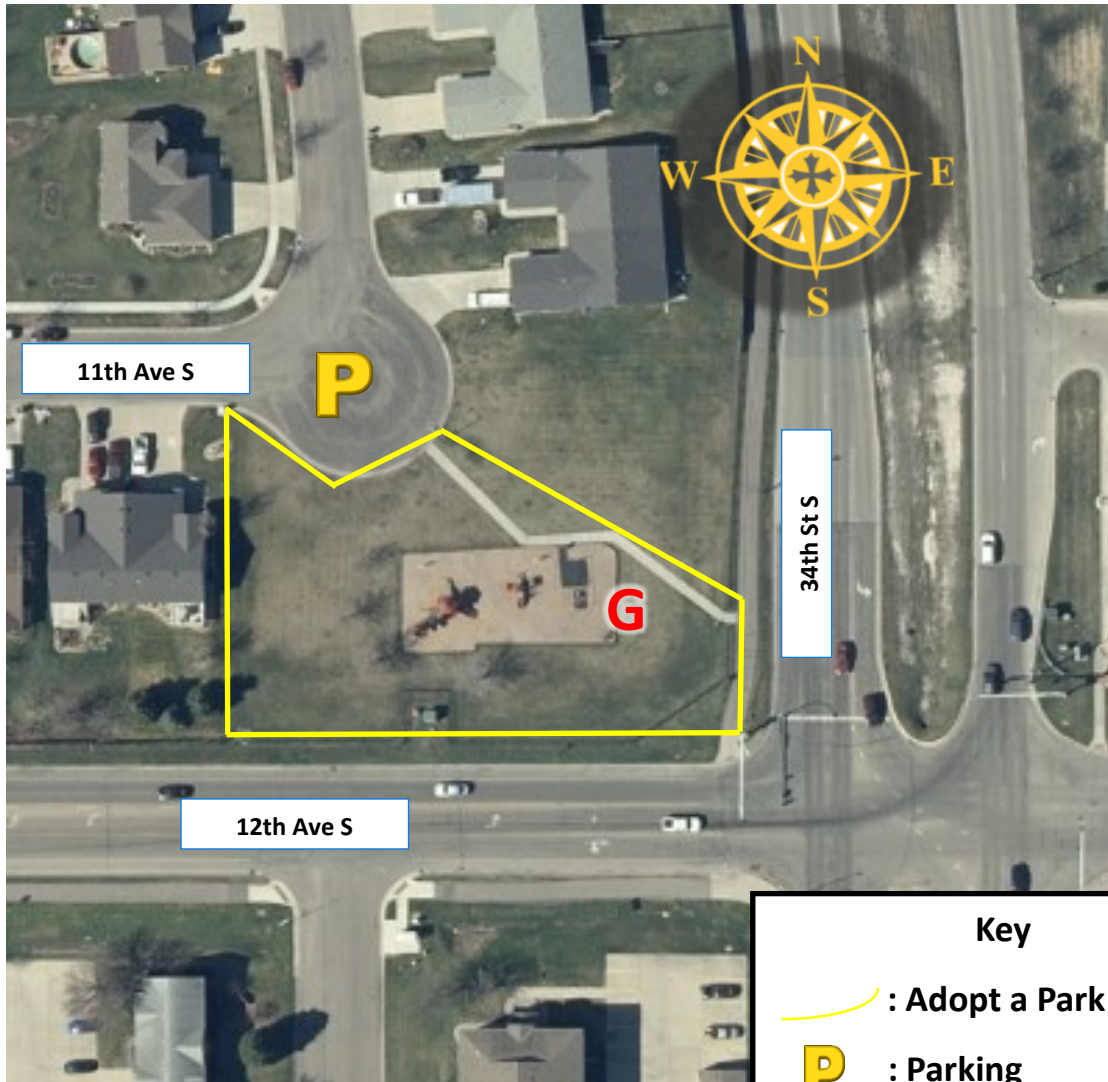
[trevor.magnuson@cityofmoorhead.com](mailto:trevor.magnuson@cityofmoorhead.com)



Parks and Recreation

1300 15<sup>th</sup> Ave N | Moorhead, MN 56560 | 218.299.5340

## Adopt a Park: The Meadows



### Zone Details

The park is bordered by 12th Ave S and 34th St S with the 11th Ave S parking loop on its northern end.

**Recommended Parking:** Parking is available in the 11th Ave S parking loop.

Adopted by:

Acres: 1

**Garbage:** Tied and placed inside the garbage cans in the park. Please notify Moorhead Parks and Recreation of location when complete with the clean up to have garbage bags picked up:

[trevor.magnuson@cityofmoorhead.com](mailto:trevor.magnuson@cityofmoorhead.com)

### Key

 : Adopt a Park zone

**P** : Parking

**G** : Garbage Drop-off



## Parks and Recreation

1300 15<sup>th</sup> Ave N | Moorhead, MN 56560 | 218.299.5340

### Adopt a Park: Townsite



#### Zone Details

The park is bordered by 3rd and 4th Ave S as well as 10th St S.

**Recommended Parking:** Parking is available in the parking lot on the parks western end.

Adopted by:

Acres: 1.5

**Garbage:** Tied and placed inside the garbage cans in the park. Please notify Moorhead Parks and Recreation of location when complete with the clean up to have garbage bags picked up:

[trevor.magnuson@cityofmoorhead.com](mailto:trevor.magnuson@cityofmoorhead.com)






Parks and Recreation

1300 15<sup>th</sup> Ave N | Moorhead, MN 56560 | 218.299.5340

## Adopt a Park: Viking Ship



Key	
	: Adopt a Park zone
	: Parking
	: Garbage Drop-off

### Zone Details

The park is bordered by 1st Ave N and the Red River with the Hjemkomst Center on the eastern end.

**Recommended Parking:** Parking is available in the Hjemkomst Center parking lot.

Adopted by:

Acres: 11




**Garbage:** Tied and placed inside the garbage cans in the park. Please notify Moorhead Parks and Recreation of location when complete with the clean up to have garbage bags picked up:

[trevor.magnuson@cityofmoorhead.com](mailto:trevor.magnuson@cityofmoorhead.com)



## Adopt a Park: Village Green East



Key	
	: Adopt a Park zone
	: Parking
	: Garbage Drop-off

### Zone Details

The park is bordered by Village Green Dr and housing on all other sides.

**Recommended Parking:** Parking is available on Village Green Dr.

Adopted by:

Acres: 2

**Garbage:** Tied and placed inside the garbage cans in the park. Please notify Moorhead Parks and Recreation of location when complete with the clean up to have garbage bags picked up:

[trevor.magnuson@cityofmoorhead.com](mailto:trevor.magnuson@cityofmoorhead.com)






## Parks and Recreation

1300 15<sup>th</sup> Ave N | Moorhead, MN 56560 | 218.299.5340

### Adopt a Park: Village Green



Key	
	: Adopt a Park zone
	: Parking
	: Garbage Drop-off

#### Zone Details

The park is bordered by 30th Ave S and 33rd Ave S with housing on its western end.

**Recommended Parking:** Parking is available in the parking lot off of 30th Ave S.

Adopted by:

Acres: 7

**Garbage:** Tied and placed inside the garbage cans in the park. Please notify Moorhead Parks and Recreation of location when complete with the clean up to have garbage bags picked up:

[trevor.magnuson@cityofmoorhead.com](mailto:trevor.magnuson@cityofmoorhead.com)






## Parks and Recreation

1300 15<sup>th</sup> Ave N | Moorhead, MN 56560 | 218.299.5340

### Adopt a Park: Village Green Sixth



Key	
	: Adopt a Park zone
	: Parking
	: Garbage Drop-off

#### Zone Details

The park is bordered by housing on its western end with sidewalks outlining the northeastern end.

**Recommended Parking:** Parking is available on 38th Ave S.

Adopted by:

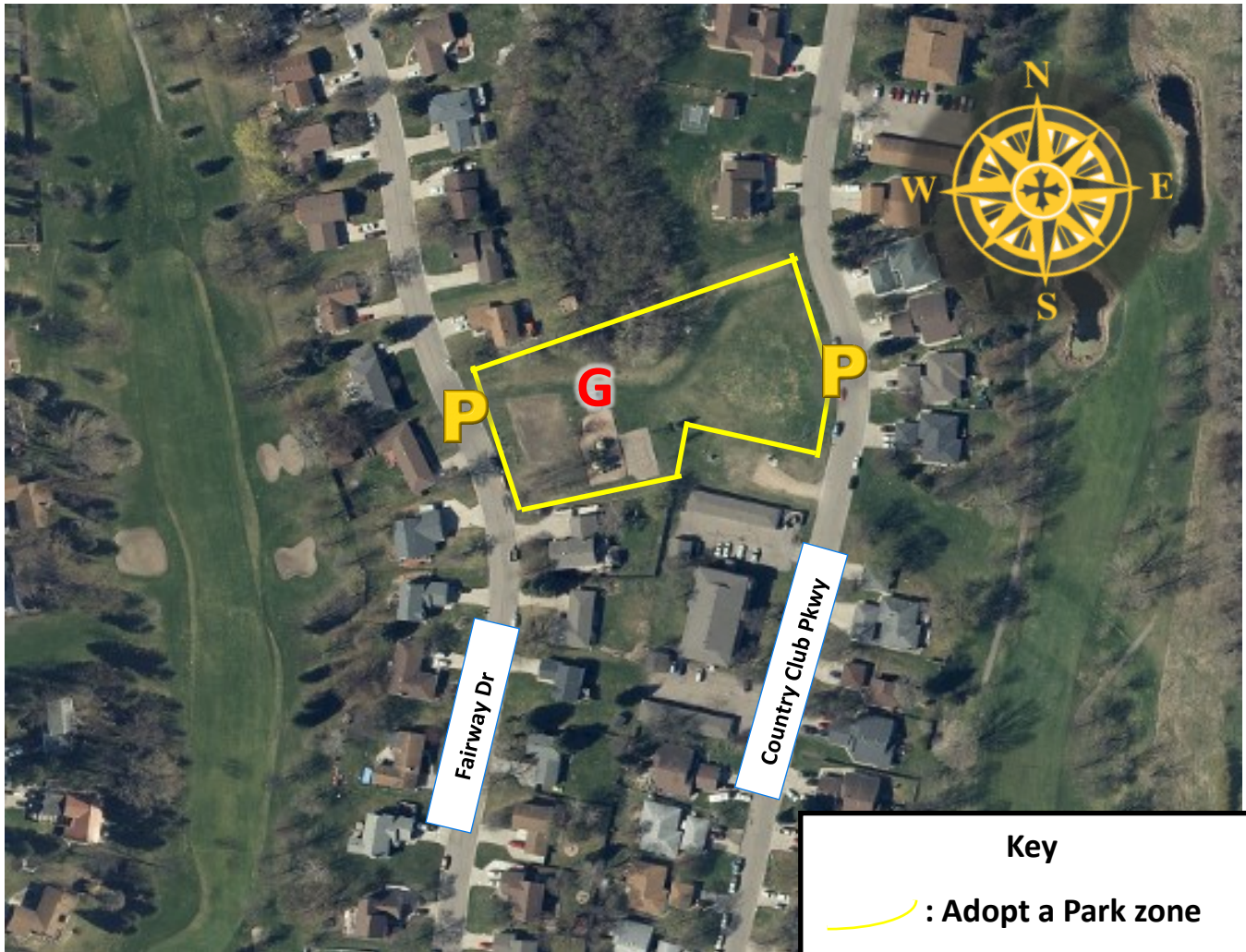
Acres: 14

**Garbage:** Tied and placed inside the garbage cans in the park. Please notify Moorhead Parks and Recreation of location when complete with the clean up to have garbage bags picked up:

[trevor.magnuson@cityofmoorhead.com](mailto:trevor.magnuson@cityofmoorhead.com)



## Adopt a Park: Voll



### Zone Details

The park is bordered by Fairway Dr and Country Club Pkwy with housing and trees on the northern and southern ends.




**Recommended Parking:** Parking is available on Fairway Dr and Country Club Pkwy.

Adopted by:

Acres: 1.5

**Garbage:** Tied and placed inside the garbage cans in the park. Please notify Moorhead Parks and Recreation of location when complete with the clean up to have garbage bags picked up:

[trevor.magnuson@cityofmoorhead.com](mailto:trevor.magnuson@cityofmoorhead.com)

Key	
	: Adopt a Park zone
	: Parking
	: Garbage Drop-off





## Parks and Recreation

1300 15<sup>th</sup> Ave N | Moorhead, MN 56560 | 218.299.5340

### Adopt a Park: Woodlawn



#### Zone Details

The park is bordered by 1st St S with trees lining the eastern border of the park.

**Recommended Parking:** Parking is available in the parking lot off of 5th Ave S.

Adopted by:

Acres: 24

**Garbage:** Tied and placed inside the garbage cans in the park. Please notify Moorhead Parks and Recreation of location when complete with the clean up to have garbage bags picked up:

[trevor.magnuson@cityofmoorhead.com](mailto:trevor.magnuson@cityofmoorhead.com)