



# CITY INSIGHTS

SPRING 2024

## Double the Fun: Two New Parks Unveiled

Exploring local parks offers more than just fresh air—it's about uncovering hidden treasures, connecting with nature, and making unforgettable memories. From peaceful trails to lively playgrounds, City of Moorhead Parks caters to all. **This year, we're thrilled to introduce two new parks: the Inclusive Playground at Southside Regional Park and the Rotary Natural Play Hill and Bike Park.**

Rotary Natural Play Hill and Bike Park

### Inclusive Playground

Phase I of the Inclusive Playground at Southside Regional Park is now complete. This playground is being enjoyed by individuals of all abilities because of rubber surfaces allowing you to roll, run or walk. Accessible park features include swings, a glider with wheelchair access, zip line and more. Fundraising continues for fencing around the perimeter of the playground. This fence will be installed as soon as funds are available and will provide an extra layer of safety to ensure children will be safe and secure within the play area.



### Rotary Natural Play Hill and Bike Park

Kids will soon have a brand-new place to explore, run, jump and immerse in nature with the Rotary Natural Play Hill and Bike Park. This 4-season play hill uses boulders, nets, logs and rocks to provide open-ended, physically challenging and unstructured play opportunities. The giant log tower and surrounding play areas are as fun to look at as they will be to climb and explore – creating new adventures and challenges for kids to enjoy.

This project also includes a bike skills park. Bike skills parks are playgrounds for bikers that include a variety of natural obstacles such as rocks and logs, created features such as land ladder bridges, teeters, and dirt jumps all collected in a small and easily accessible location.

The Rotary Natural Play Hill and Bike Park will open this summer after phase I of construction is complete. The new park will be enhanced with extra features during phase II as funding is available.

To be alerted of park openings and other park related announcements, subscribe to notifications at [cityofmoorhead.com/notifications](http://cityofmoorhead.com/notifications).

### Park Locations:



Inclusive Playground

2000 40 Ave S, Moorhead



Rotary Natural Play Hill and Bike Park

600 1 Ave N, Moorhead

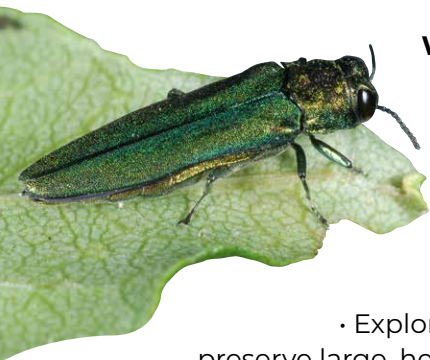


### Keep the Fun Going!

Donate today to help bring exciting features to these two new parks.

## Emerald Ash Borer

Did you know Emerald Ash Borer (EAB) is a wood-boring insect discovered in Moorhead last year. The EAB is sneaky and hard to detect early on, taking 3-7 years for a community to notice an infestation. Without action, 80% of trees can die within years 7-12 of infestation.



### What Residents Can Do (private property)

- Check your property for ash trees.
- Consider removing small or unhealthy trees now.
- Explore treatment options to preserve large, healthy trees.

### What The City Is Doing

(public property including boulevards):

- Proactively removing small ash trees.
- Treating 1700 Ash trees annually in 3-year treatment cycle began in 2023.
- Replacing removed trees with a diverse mixture of tree species to create a robust and sustainable future urban forest.

**Let's work together to  
protect our urban forest!**



## Let's Keep the Storm Drains for the Rain

The mantra "only rain in the storm drain" encourages residents to refrain from disposing grass clippings, leaves, or yard waste into streets and gutters.

Instead, the City advocates for recycling yard waste through the curbside collection program or at designated drop-off stations.

To support sustainable living, River Keepers hosts workshops focused on constructing compost tumblers and rain barrels. These initiatives aim to empower residents to actively participate in water conservation efforts.

Rain barrels are a key component in stormwater management and offer numerous benefits. By capturing rainwater from rooftops, they mitigate strains on the storm sewer system while conserving water resources. Notably, utilizing rain barrels can significantly reduce monthly water bills and save over 1,000 gallons of water during peak summer months.

Residents are encouraged to be proactive in safeguarding water quality and sustainability. To report a prohibited discharge, please contact 218.299.5387. Let's collectively contribute to the solution, not the pollution, for the betterment of our community and environment.

For more information on workshop schedules and registration, please visit [riverkeepers.org](http://riverkeepers.org) or contact [kimberly@riverkeepers.org](mailto:kimberly@riverkeepers.org).



## FIND A CAREER in the Community you Love!



- ▶ Police and Fire
- ▶ Public Works
- ▶ Engineering
- ▶ Parks and Recreation
- ▶ Internships and Seasonal Positions

Learn more at [CityofMoorhead.com/Jobs](http://CityofMoorhead.com/Jobs)



## “Onward Moorhead: A Plan in Action!”

The City of Moorhead’s Comprehensive Plan is a roadmap that helps the City implement the community’s vision over the next 10 years. Community members, businesses and others worked with the City to create the Plan. Here is an update on recent projects and initiatives that advance the Five Big Ideas outlined in the Plan:

### Interpretive Signs

Seventeen interpretive signs detailing the history and ecology of Moorhead and the Red River were installed along the River Corridor thanks to a grant from the HDR Foundation. This installation will be completed in 2024 and is a collaboration between the City of Moorhead, the Historical and Cultural Society of Clay County, and Riverkeepers. Signs were designed by local artists Dennis Krull (5foot20 Design Lounge) with supporting art installations created by Anna Kann.



### Industrial Park Expansion

The MCCARA Industrial Park has been expanded and infrastructure was extended to include additional buildable light industrial lots ranging in size from 2 to 8 acres east of the existing MCCARA Industrial Park. The expansion was made possible by a \$2 million grant from the State of Minnesota’s Business Development Public Infrastructure Grant Program, which is available to cities in Greater Minnesota. Contact the City’s Economic Development team if you may be interested in purchasing a lot.

### Climate Resilience Study and Strategies

The City of Moorhead received a State of Minnesota grant from the Minnesota Pollution Control Agency to study stormwater, wastewater, and community climate resilience to localized flooding during and after heavy rain events. The City used this grant to develop climate-resilient strategies – including a modeling and assessment report – to reduce risk to vulnerable community assets resulting from increased rainfall events caused by climate change. Check out the full report at [cityofmoorhead.com](http://cityofmoorhead.com) under Departments/Stormwater.

## 5 BIG IDEAS that will guide comprehensive plan activity for the next 5 years

- 1 **TRANSFORM** downtown Moorhead into the ‘heart of the community’
- 2 **INTEGRATE** a mix of mutually supportive land uses and experiences in redevelopment areas
- 3 **CONNECT** neighborhoods to parks and trails and provide multimodal access across the city
- 4 **EMBRACE** resilient environmental and equitable solutions to ensure a greener community
- 5 **BUILD AND NURTURE** local businesses as key partners

# Get Ready for Cleanup Days!

Furniture, household goods, and appliances will be collected at single-family residence curbs during Cleanup Days on your scheduled garbage day in early May beginning at 5 am at no additional cost.

Apartments are not eligible for curbside pickup. All residents may bring excess garbage to the Clay County Resource Recovery Center at the times noted below, free of charge with proof of residency.

## Cleanup Day Schedule: May 6-17\*

Su	M	Tu	W	Th	F	S
5	6	7	8	9	10	11
12	13	14	15	16	17	18

**B Week Recyclers:**

Your cleanup day is your garbage day, May 6-10.

**A Week Recyclers:**

Your cleanup day is your garbage day, May 13-17.

Cleanup Day will be your garbage day, opposite your recycling week.

Check if you are an **A Week** or **B Week** Recycler:

**A Week** **B Week**

April Schedule

Su	M	Tu	W	Th	F	Sa
	1	2	3	4	5	6
7	8	9	10	11	12	13
14	15	16	17	18	19	20
21	22	23	24	25	26	27
28	29	30				

May Schedule

Su	M	Tu	W	Th	F	Sa
			1	2	3	4
5	6	7	8	9	10	11
12	13	14	15	16	17	18
19	20	21	22	23	24	25
26	27	28	29	30	31	

\*Exception: Oakport neighborhood, your cleanup day will be May 21, same as recycling day.

### CREWS WILL NOT COLLECT THE FOLLOWING ITEMS CURBSIDE:

#### Demolition/Construction Materials:

Materials include lumber, vanities, cabinets, concrete, sheet rock, fencing material, windows, doors, and asphalt shingles.

#### Take construction materials to:

##### Clay Demolition Debris Landfill

6 miles west of Hawley and ¼ mile N of HWY 10; 701.642.3207

##### Clay County Resource Recovery Center

M-F, 8am-4pm, first and third Saturday of each month, 8-11:30am; 3322 15 Ave N, Moorhead; 218.299.5016. Enter the 15 Ave N entrance.

Small loads only, no dump trailers. Loads need to be self-unloaded and fees will apply.

#### Residential Electronics or Household Chemicals

Paint, stain, varnish, automotive fluids, computers, computer monitors, computer peripherals, televisions, fluorescent bulbs, LEDs, cell phones, rechargeable batteries.

#### Take chemicals and electronics to:

##### Clay County Resource Recovery Center

M-F, 8am-4pm; first and third Saturday of each month, 8-11:30am; 3322 15 Ave N, Moorhead, MN; 218.299.5016. Enter through the 15 Ave N entrance.

### CLEANUP DAYS GUIDELINES:

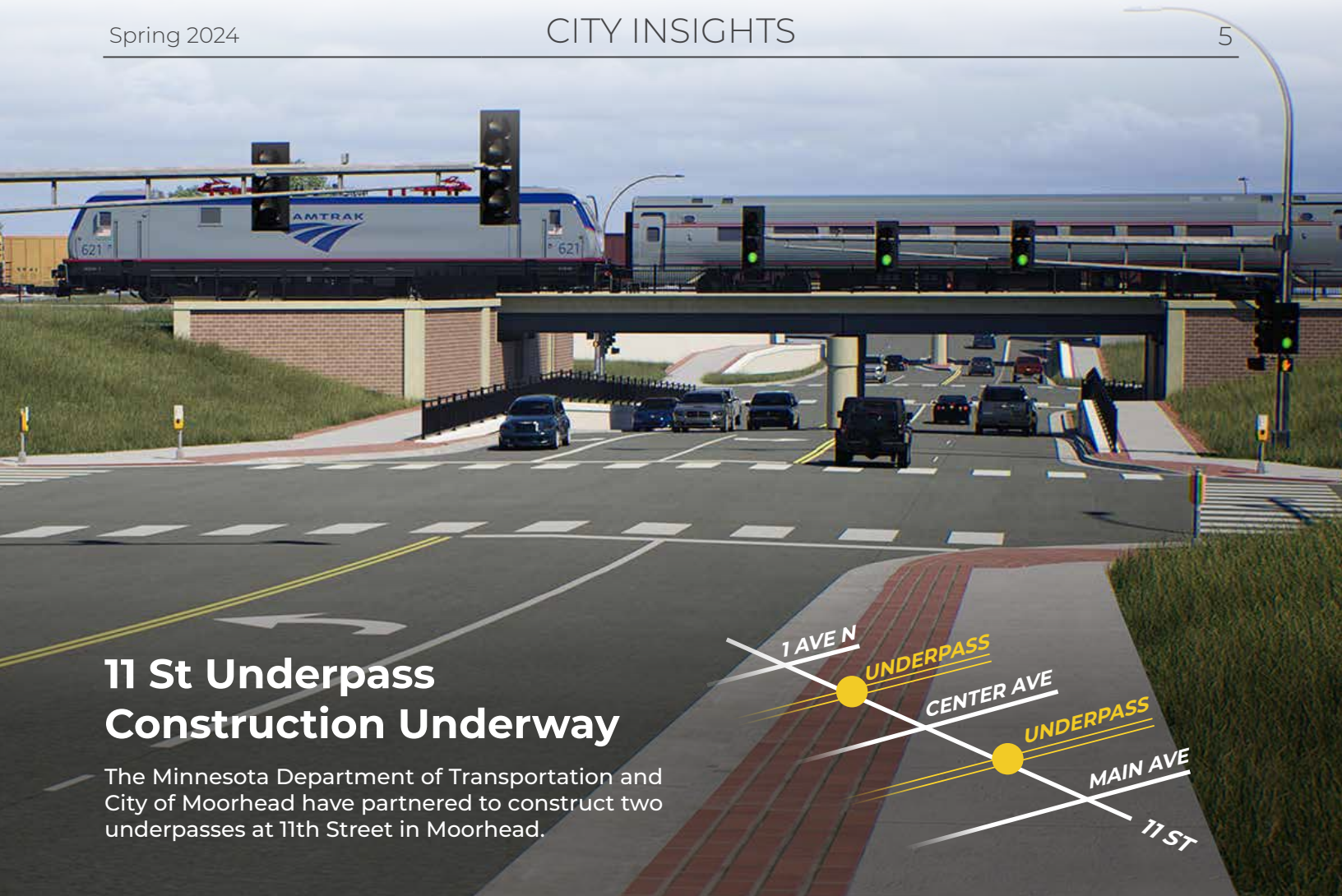
- Tires will NOT be collected at the curb. Homeowners can dispose of them at retail tire stores or the Resource Recovery Center for a fee.
- Sort items into piles; different trucks collect specific categories (appliances, furniture, household garbage, metal, etc.)
- Use disposable containers such as cardboard boxes (no loose garbage please).
- Do not set items out more than one day earlier than your Cleanup Day.
- Crews will not return to pick up garbage set out after your garbage day.
- Two appliances per household will be picked up free of charge. Remove refrigerator and freezer doors for children's safety.
- Do not place food or waste in appliances.
- No commercial waste accepted.
- Keep garbage totes at least 4 feet away from Cleanup Days items.
- Empty propane tanks will also be collected. (Valve needs to be removed or a hole needs to be drilled into the tank)

Get a jump on spring cleanup by bringing furniture, household goods, and excess garbage to the **Clay County Resource Recovery Center (3322 15 Ave N) from April 29-May 17 from 8am-4pm**, as well as **Saturdays May 4 and 18 from 8-11:30am**, free of charge. (This also applies to apartments.) Fees will apply for demolition/construction materials and tires; proof of Moorhead residency (i.e. driver's license) required.

For more information, visit [cityofmoorhead.com/CleanupDays](http://cityofmoorhead.com/CleanupDays)

Call 218.299.5465 from **noon-3:30pm**

Call 218.299.5347 from **8am-noon**



# 11 St Underpass Construction Underway

The Minnesota Department of Transportation and City of Moorhead have partnered to construct two underpasses at 11th Street in Moorhead.

## Construction has started! Here's what you need to know to stay informed:

- ▶ Construction to be completed in stages over three years, from March 2024 through Fall 2026
- ▶ In 2024, Stage 1 will largely affect portions of 1 Ave N and 11 St
- ▶ Follow signed detours to navigate around construction



Are you a resident or business owner with questions about current construction?

**Call 218.292.8779**



**Sign up for project updates from MnDOT**

You'll also find maps, contacts and other project information.

[mndot.gov/d4/projects/moorhead11thstunderpass](https://mndot.gov/d4/projects/moorhead11thstunderpass)

## Sewer issues: The City of Moorhead provides 24-hour on-call service

Sewer issues are something that no homeowner ever wants to experience. Heavy rainfall, loose debris, tree roots, and pipe deterioration or damage can cause sewer systems to not function properly. The City of Moorhead provides a 24-hour, on-call service to provide guidance to homeowners with sewer problems.

### If you experience slow drains or sewer back-up, there are some important steps to take:

- ▶ Contact the City at 218.299.5386 (prior to calling a plumber).
- ▶ City staff will inspect the sewer main and determine if the blockage is in the main line or your private service. The sewer from a building to the sewer main is owned and maintained by the property owner. The City is responsible for the sewer main, which is generally located in the middle of the street.
- ▶ If the problem is in the City sewer main, City staff will correct the problem at no cost to you.
  - The City cannot reimburse you for contractor expenses incurred before contacting the City. Also, if a plumber has made repairs before the City evaluates whether the problem may be a City responsibility, the City cannot pay the plumbing costs.
  - If a problem in the City sewer main resulted in damage to your property, contact the Wastewater Division for direction in filing a claim with the City's insurance provider. An adjuster will review the claim to determine liability.

### Sewer odors can occur when basement floor or other drain traps dry up and allow sewer gas to enter buildings. Other times, a blocked roof vent may prevent sewer gas from releasing outside. In order to prevent sewer odor:

- ▶ Periodically check seldom-used drains and refill with water.
- ▶ Add a tablespoon or two of vegetable oil or mineral oil to slow evaporation.
- ▶ Keep roof vents free from obstructions, such as leaves, snow and ice.
- ▶ If sewer odor persists, call the City at 218.299.5386.



## Make sure sump pumps are disconnected from sanitary sewer system

It's spring, and that means it's time for Moorhead residents to disconnect sump pump hoses from the sanitary sewer system. Drainage should be directed to the street, backyard or side yard (please be courteous to your neighbors when choosing where to discharge). Sump pump discharges to the sanitary sewer overload the sanitary sewer system, which leads to basement back-ups for both you and your neighbors.

Residents may request a seasonal waiver to allow sump discharge into the sanitary sewer from November 1-March 31. Because the risk of significant rain events is lower during this time period, the sanitary sewer system is capable of handling this extra water. That changes during the spring and summer months.

We appreciate your cooperation to ensure the capacity of our wastewater treatment.

**If you have questions about sump pump discharge, please contact the Wastewater Division at 218.299.5386.**

## EVENTS

### River Paddling Excursions

Every other Wednesday, May 29-Sept. 4, 5:30-8pm  
Hjemkomst Landing, 202 1 Ave N

Join these relaxing downtown river tours as local guest speakers share their canoeing and kayaking experience. Must register in advance; \$10/person if bringing your own kayak/canoe; \$15 with vessel rental. See schedule and register at moorheadparks.com. For info: 218.299.5340.

### Plant + Seed Exchange • Sunday, May 19, 1-5pm Woodlawn Garden and Amphitheater

Have plants in your flowerbed that need to be split? Extra annuals that don't fit? Participate in the Plains Art Museum's annual plant and seed exchange! No invasive varieties or non-labeled plants. Email questions to: amccann@plainsart.org.

### Dive Into Summer • Tuesday, June 4; 6:30-8:30pm Moorhead Municipal Pool, 800 19 St S

Free open swim, chips and soda while supplies last – plus a chance to win some great summer prizes! Children 8 years and under must be accompanied by an adult. Season pool passes will be available for purchase.

### Moorhead Farmers Market Tuesdays, June 4-September 24; 3:30-6:30pm Hjemkomst Center Parking Lot, 202 1 Ave N

Find vegetables, fruit, baked goods, honey, jams, pet products and hand-crafted items available for purchase. SNAP Benefits are accepted with matching dollars courtesy of Hunger Solutions of Minnesota. Live music at the market 4-6 pm each day!

### Moorhead RiverArts at the Market Five Tuesdays, 5:30-8pm – NEW LOCATION!

**June 11:**  
Post Traumatic Funk Syndrome + Nordic Night  
Viking Ship Park, 202 1 Ave N

**June 25:**  
Gina Powers Band + Petting Zoo  
Viking Ship Park, 202 1 Ave N

**July 11:**  
Heart & Soul + Barrel Car Ride  
Heritage Garden/Amphitheatre, 400 Woodlawn Dr

**July 23:**  
Hiahli + Fishing Clinic  
Viking Ship Park, 202 1 Ave N

**August 6:**  
Front Fenders + Dunk Tank  
Viking Ship Park, 202 1 Ave N

Join us for cultural performances, artist-led demonstrations and activities, inflatable games, a photo station and more fun for everyone! Activities are subject to change. Non-profits, organizations and individuals can sell goods, share their expertise or provide games or activities for attendees. Call 218.299.5078 to get involved!

### Safe City Nights, 5:30-7:30pm

(Sponsored by Moorhead Police, Moorhead Police Athletics & Activities League, Moorhead Parks & Rec, Moorhead Fire Department, Oertli State Farm Insurance, Gate City Bank and the City of Moorhead)

**June 26:** Robert Asp Elementary  
**July 17:** Ellen Hopkins Elementary  
**July 31:** Queens Park

Neighborhood events featuring public safety vehicles, coloring contest, games, bike repair, helmet fitting, door prizes and more! Pizza and ice cream provided.

### FM Kicks Band Summer Concerts

**June 20, 7pm:** Gooseberry Park, 100 22 Ave S  
**July 18, 7pm:** Gooseberry Park, 100 22 Ave S  
**Aug. 4, Noon-5pm:** Gooseberry Park, 100 22 Ave S  
**Sept. 7, 3pm:** Viking Ship Park, 202 1 Ave N

These concerts feature vocal and instrumental arrangements of classic and contemporary big band music composers. Enjoy a variety of music including funk, rock, blues, swing and more. This activity is made possible by the voters of Minnesota through a grant from the Minnesota State Arts Board, thanks to a legislative appropriation from the Minnesota Arts and Cultural Fund.

### Scandinavian Festival • Friday-Saturday, June 21-22 Hjemkomst Center, 202 1 Ave N

Come experience the culture of Scandinavian countries through music, food, and vendor booths.

### Summer Splash • Thursday, July 25, 2-4pm Moorhead Municipal Pool, 800 19 St S

Splash into an afternoon of FREE fun at the pool with games, a diving contest, water inflatables, and more!

### Night to Unite • August 6

Plan a family-friendly neighborhood gathering to connect with your neighbors. Register events at cityofmoorhead.com (search Night to Unite) to receive a party planning kit. Call 218.299.5143 for more information.

### Doggy Dip • Monday, August 12, 3:30-7:30pm South Park Wading Pool, 2102 14 St S Northeast Park Wading Pool, 1817 8 Ave N

\$5/dog; all proceeds benefit Moorhead's dog parks! Dogs should have a collar, carry ID tags, be properly licensed, vaccinated and in good health to swim.

### Greater Moorhead Days September 7-16 / Various locations

Celebrate our amazing community with Greater Moorhead Days! Enjoy a variety of fun and exciting events for all ages, including the Greater Moorhead Days Parade, Midco Kids Fest, the Medallion Hunt and more! This 10-day celebration is the perfect time to express your Moorhead pride. Find more events and information at moorheadparks.com.

### Citizens Police Academy • Sept. 12-Nov. 21, 6-9pm

The Academy will lead citizens to a better understanding of what it is like to be a police officer. Experience K-9 demonstrations, SWAT, narcotics investigations and more. Apply at cityofmoorhead.com (search Citizens Police Academy) or call 218.299.5143. Class size is limited.



**MAY**

- 6-10 Cleanup Days for Recycling B Schedule
- 13-17 Cleanup Days for Recycling A Schedule
- 19 Plant and Seed Exchange at Woodlawn Park
- 21 Oakport Cleanup Day
- 27 Memorial Day  
(City Offices closed | no garbage\*)

**JUNE**

- 4 Farmers Market Opens at Hjemkomst  
(Tuesdays through September 24)
- 4 Dive into Summer at Moorhead Pool
- 11 RiverArts at Viking Ship Park
- 19 Juneteenth  
(City Offices closed | no garbage\*)
- 25 RiverArts at Viking Ship Park
- 26 Safe City Night at Robert Asp Elementary

**JULY**

- 4 Independence Day  
(City Offices closed | no garbage\*)
- 11 RiverArts at Woodlawn Park
- 17 Safe City Night at Ellen Hopkins Elementary
- 23 RiverArts at Viking Ship Park
- 25 Summer Splash at Moorhead Pool
- 31 Safe City Night at Queens Park

**AUGUST**

- 6 Night to Unite
- 6 RiverArts at Viking Ship Park
- 12 Doggy Dip at South and Northeast Park Pools

**SEPTEMBER**

- 2 Labor Day  
(City Offices closed | no garbage\*)
- 6 Greater Moorhead Days
- 12 Citizens Police Academy (runs to Nov. 21)

\*Please check News at [cityofmoorhead.com](http://cityofmoorhead.com) for holiday garbage collection changes.

ECRWSS  
POSTAL CUSTOMER

[facebook.com/cityofmoorhead](https://facebook.com/cityofmoorhead)

**Moorhead City Council**



**Mayor**  
Shelly Carlson  
218.299.5307

**Ward 1**



Matthew Gilbertson  
218.299.5541



Ryan Nelson  
218.299.5549

**Ward 2**



Laura Caroon  
218.299.5543



Heather Nesemeier  
218.299.5547

**Ward 3**



Larry Seljevold  
218.299.5544



Deb White  
218.299.5548

**Ward 4**



Chuck Hendrickson  
218.299.5545



Sebastian McDougall  
218.299.5542

City Council meetings are held the second and fourth Mondays of each month at 5:30 pm at the Hjemkomst Center. Visit our website for agendas and materials.

**City Services**

Administration (general information)	218.299.5166
Engineering	218.299.5390
Community Development	218.299.5434
Moorhead Public Library	218.233.7594
Police (non-emergency)	218.299.5120
Fire (non-emergency)	218.299.5298
Parks and Recreation	218.299.5340
Public Works	218.299.5422
Moorhead Public Service (MPS)	218.477.8000

**Emergency 911**